

## 2015 CAL WOMEN'S GYMNASTICS SCHEDULE

<b>DATE</b>	<b>OPPONENT (TV)</b>	<b>LOCATION</b>	<b>TIME (PT)</b>
Sunday, Jan. 4	at NorCal Classic (Stanford, SJSU, Sac St., UC Davis)	Davis, Calif.	2 p.m.
Friday, Jan. 9	at Sacramento State	Sacramento, Calif.	7 p.m.
Friday, Jan. 16	at San Jose State, UW-La Crosse	San Jose, Calif.	7 p.m.
<b>SUNDAY, JAN. 25</b>	<b>ARIZONA STATE, SAN JOSE STATE, DENVER</b>	<b>BERKELEY, CALIF.</b>	<b>2 P.M.</b>
Sunday, Feb. 1	at UCLA (Pac-12 Networks)	Los Angeles, Calif.	10 a.m.
<b>SUNDAY, FEB. 8</b>	<b>STANFORD (PAC-12 NETWORKS)</b>	<b>BERKELEY, CALIF.</b>	<b>12 P.M.</b>
<b>FRIDAY, FEB. 13</b>	<b>OREGON STATE</b>	<b>BERKELEY, CALIF.</b>	<b>7 P.M.</b>
Saturday, Feb. 21	at Washington, Seattle Pacific	Seattle, Washington	7 p.m.
Saturday, Feb. 28	at Arizona (Pac-12 Networks)	Tuscon, Ariz.	5 p.m.
<b>SUNDAY, MARCH 8</b>	<b>UC DAVIS -- CO-ED MEET (PAC-12 NETWORKS)</b>	<b>BERKELEY, CALIF.</b>	<b>12 P.M.</b>
Friday, March 13	at Southern Utah	Cedar City, Utah	6 p.m.
Saturday, March 21	at Pac-12 Championships (Pac-12 Networks)	Tempe, Ariz.	TBD
<b>SATURDAY, APRIL 4</b>	<b>NCAA REGIONALS</b>	<b>BERKELEY, CALIF.</b>	<b>TBD</b>
Friday, April 17	NCAA Championship Semifinals	Fort Worth, Texas	TBD
Saturday, April 18	NCAA Championship Super Six	Fort Worth, Texas	TBD
Sunday, April 19	NCAA Championship Ind. Finals	Fort Worth, Texas	TBD

All times listed Pacific Time | Home meets listed in **BOLD**

### MEDIA INFORMATION

#### WOMEN'S GYMNASTICS CONTACT

Mara Rudolph  
 Office Phone: 510-643-5846  
 Cell Phone: 510-384-6574  
 Email: marar@berkeley.edu  
 Fax: 510-643-7778

#### INTERVIEWS

Interviews with the student-athletes and coaches will be coordinated by Mara Rudolph and Cal's Athletic Communications office and must be requested at least one day in advance. Phone interviews can also be arranged.

#### CREDENTIALS

All members of the media wishing to cover a California Women's Gymnastics meet must request appropriate credentials in advance from Mara Rudolph or another member of the Cal Athletic Communications staff. Credential requests should be submitted via email and can be picked up from the Cal Athletic Communications Office on the third floor of Haas Pavilion, or at Will Call of Haas Pavilion an hour before a meet starts.

#### HAAS PAVILION (MEET VENUE)

All home California gymnastics meets are held at the Walter A. Haas Jr. Pavilion on the University of California campus. The arena is located just north of Bancroft Way between Dana and Ellsworth streets. Press row is located on the east side of the building between sections 14 and 18.

#### GOLDEN BEAR REC CENTER (PRACTICE VENUE)

The Cal gymnasts hold practice at the Golden Bear Gym in Golden Bear Rec Center. The rec center is located near the easternmost point of Dwight Way, at 25 Sport Lane in Berkeley, Calif. Street parking is available on Dwight Way.

#### MEET PARKING

Public parking for Cal gym meets is available in the Recreational Sports Facility (RSF) garage for a fee. The garage is located at 2301 Ellsworth Street and can be accessed by both Bancroft Way or Ellsworth Street.

#### TICKETS

Tickets for California Women's Gymnastics meets are \$10 for adults and \$5 for youth (12th grade and under) and seniors (age 65 and above). Tickets for all regular-season home meets will be available for purchase at the ticket office on Spieker Plaza the day of the meet, beginning approximately one hour before the start of each meet and through the end of the second rotation.

#### CAL ON THE WEB

Updated statistics, weekly releases, recaps, notes, features and more can be accessed at [www.CalBears.com](http://www.CalBears.com).

#### CAL IN THE SOCIAL MEDIA REALM

To access the official social media accounts of Cal Women's Gymnastics, visit:  
 Facebook: [www.Facebook.com/CalWomensGymnastics](http://www.Facebook.com/CalWomensGymnastics)  
 Twitter: @CalWGYM  
 Instagram: @CalWGYM

# TABLE OF CONTENTS

<b>SEASON INFORMATION .....</b>	<b>1-3</b>
Schedule .....	1
Quick Facts .....	2
Roster .....	3
<b>MEDIA INFORMATION .....</b>	<b>1, 48</b>
Media Information .....	1
Broadcast Roster .....	48
<b>COACH INFORMATION .....</b>	<b>4-6</b>
Head Coach Justin Howell.....	4
Associate Head Coach Elisabeth Crandall-Howell.....	5
Volunteer Assistant Coaches .....	6
<b>GYMNAST BIOS.....</b>	<b>7-23</b>
Isabelle Castillo .....	7
Zoe Draghi.....	8
Alicia Gallarzo .....	9
Kristi Heymann .....	10
Dana Ho .....	11
Jessica Howe .....	12
Maddie Kratzke .....	13
Serena Leong.....	14
Charlie Owens.....	15
Desiree Palomares.....	16
Crystal Paz .....	17
Emily Richardson .....	18
Arianna Robinson .....	19
Yuleen Sternberg.....	20
Amber Takara.....	21
Jordan Widener.....	22
Toni-Ann Williams .....	23
<b>2014 SCORES &amp; STATISTICS.....</b>	<b>24-26</b>
2014 Results .....	24
2014 Top Scores .....	24
2014 Individual Scores .....	25-26
2014 Event Titles .....	26
<b>HISTORY &amp; RECORDS.....</b>	<b>27-47</b>
All-Time Top Individual Scores .....	27
All-Time Top Team Scores .....	28
Honors and Awards .....	29-30
Year-by-Year Results .....	31
All-Time Coaching Records.....	31
Year-by-Year Schedule & Results.....	32-38
Series Records.....	39
Conference Championships Results .....	40-42
NCAA Regionals Results.....	43-44
NCAA Regionals Series Records .....	44
NCAA Championships Results .....	45
NCAA Championships Series Records .....	45
All-Time Roster .....	46-47

# QUICK FACTS

## UNIVERSITY OF CALIFORNIA

**Location:** Berkeley, Calif.  
**Founded:** 1868  
**Enrollment:** 36,204  
**Nickname:** Golden Bears  
**Colors:** Blue (282) and Gold (116)  
**Conference:** Pac-12  
**Chancellor:** Nicholas Dirks  
**Interim Athletic Director:** H. Michael Williams  
**Senior Women's Administrator:** Jenny Simon-O'Neill

## COACHING STAFF

**Head Coach:** Justin Howell (San Jose State, '99)  
**Record at Cal:** 26-31, Third Season  
**Assistant Coach:** Elisabeth Crandall (BYU '97)  
**Volunteer Assistant Coach:** Jessa Hansen (Iowa '12)  
**Volunteer Choreographer:** Jeffrey Langenstein (California '13)  
**Office Phone:** 510-643-0282  
**Office Fax:** 510-643-5568

## 2014 TEAM INFORMATION

**Arena:** Haas Pavilion (11,877)  
**2014 Overall Record:** 16-12  
**2014 Conference Record:** 6-7 (including Pac-12 Championships)  
**2014 Pac-12 Championships Finish:** 3rd  
**2014 National Ranking:** 16  
**Letterwinners Returning:** 9  
**Newcomers:** 4

## CAL WOMEN'S GYMNASTICS SOCIAL MEDIA

**Facebook:** [www.Facebook.com/CalWomensGymnastics](http://www.Facebook.com/CalWomensGymnastics)  
**Twitter:** @CalWGYM  
**Instagram:** @CalWGYM

## ATHLETIC COMMUNICATIONS

**Women's Gymnastics Contact:** Mara Rudolph  
**E-mail:** [marar@berkeley.edu](mailto:marar@berkeley.edu)  
**Office Phone:** 510-642-5363  
**Cell Phone:** 510-384-6574  
**Mailing Address:** 349 Haas Pavilion, Berkeley, CA 94720  
**Website:** [www.CalBears.com](http://www.CalBears.com)

### CALIFORNIA GOLDEN BEARS USAGE GUIDELINES

When referring to the University of California's athletic teams, please use California or Golden Bears on first reference. Cal or Bears may be used in following references. Terms such as UC Berkeley, Cal Berkeley, Berkeley and California-Berkeley (or similar variations) are incorrect and should not be used in connection with Cal Athletics.



## 2015 CAL WOMEN'S GYMNASTICS ROSTER

NAME	EVENTS	YEAR	HEIGHT	HOMETOWN (LAST SCHOOL/CLUB)
Isabelle Castillo	AA	SO	5-1	Newark, Calif. (Newark Memorial/California)
Zoe Draghi	AA	SO	5-1	Long Beach, Calif. (Wilson/Wildfire)
Alicia Gallarzo	AA	FR	5-3	Burbank, Calif. (Burbank/Wallers' GymJam)
Kristi Heymann	AA	JR	5-3	Los Gatos, Calif. (Los Gatos/Airborne)
Dana Ho	AA	SO	5-3	Plano, Texas (Plano East/WOGA)
Jessica Howe	AA	SO	5-3	Plano, Texas (Spring Creek Academy/WOGA)
Maddie Kratzke	AA	SR	5-4	Seattle, Wash. (Edmonds Woodway/Seattle)
Serena Leong	V/BB/FX	JR	5-0	San Ramon, Calif. (Chinese Christian/Edge)
Charlie Owens	AA	SO	5-4	Alta Loma, Calif. (Los Osos/Charter Oak)
Desiree Palomares	AA	SO	4-11	San Dimas, Calif. (San Dimas/Charter Oak)
Crystal Paz	V/BB/FX	SR	5-1	Fremont, Calif. (Moreau Catholic/California)
Emily Richardson	AA	SO	5-1	Fort Smith, Ark. (Liberty/WOGA)
Arianna Robinson	AA	FR	5-2	Chantilly, Va. (Freedom/Hill's)
Yuleen Sternberg	AA	FR	5-3	Berkeley, Calif. (Berkeley/Head Over Heels)
Amber Takara	AA	SO	5-1	Tacoma, Wash. (Stadium/Auburn)
Jordan Widener	AA	JR	5-6	Snohomish, Wash. (Glacier Peak/Leading Edge)
Toni-Ann Williams	AA	FR	5-1	Randallstown, Md. (Roland Park Country Day School/United Gymnastix)

### SUPPORT STAFF

**Head Coach:** Justin Howell (San Jose State '99)  
**Associate Head Coach:** Elisabeth Crandall-Howell (BYU '97)  
**Volunteer Assistant Coach:** Jessa Hansen (Iowa '12)  
**Volunteer Choreographer:** Jeffrey Langenstein (California '13)  
**Athletic Trainer:** Rachel Salazar  
**Strength and Conditioning Coach:** Ahmad Wright  
**Academic Advisor:** TBA

### PRONUNCIATION GUIDE

Isabelle <b>Castillo</b>	Cass-T-yo
Zoe <b>Draghi</b>	Drahg-E
<b>Alicia Gallarzo</b>	Uh-LEE-C-ah Gull-R-zo
Maddie <b>Kratzke</b>	Krat-ski
Serena <b>Leong</b>	LEE-ohng
Desiree <b>Palomares</b>	Pal-oh-mar-ess
Crystal <b>Paz</b>	Paws
<b>Arianna</b> Robinson	R-E-ahna
<b>Yuleen</b> Sternberg	You-LEAN

## HEAD COACH JUSTIN HOWELL



Justin Howell, a well-respected Bay Area club coach, took the helm of the Cal Women's Gymnastics program in June of 2012 and made an immediate impact, elevating the Golden Bears to new heights in his first two seasons as head coach.

Shortly before Howell took over the program, the Bears finished the 2012 season ranked 49th nationally. In just two years time, Howell has led the Bears to a No. 16 ranking with a growing conference and national presence. Cal's 33-spot rise since 2012 marks the largest margin of improvement in NCAA gymnastics history, a feat only one other school has achieved (Maryland, 1997-99).

In 2014, the Bears rewrote the Cal Women's Gymnastics record books, improving in areas across the board. It was the first time Cal claimed two individual berths to the NCAA Championships in program history, and the first time Cal sent gymnasts to the NCAA Championships since 2003. The Bears also finished third at the Pac-12 Championships, which was the program's highest finish ever, and the team also posted its highest Pac-12 Championships score (196.550).

Howell also guided the 2013 squad to its first NCAA Regional berth since 2007 and a season-high team score of 196.525, the second-highest score in program history and highest score since March 2007. For his tremendous accomplishments in his debut season as head coach, Howell was recognized as the 2013 Pac-12 Coach of the Year and 2013 NACGC West Region Coach of the Year.

Prior to becoming head coach, Howell was assistant coach with the Golden Bears for the 2012 season. Howell was elevated to the top post following a national search for the position following Danna Durante's resignation to become the head women's gymnastics coach at the University of Georgia.

In his first season on the Cal staff, Howell played a major role in guiding the squad to an average score nearly a full point higher than the year prior to his arrival. The Golden Bears saw measureable improvement across the board with 23 gymnasts recording personal high scores and eight student-athletes earning Pac-12 All-Academic honors.

Howell brings more than 15 years of experience as a head coach in the area, having served as the head coach and team director at Airborne Gymnastics in Santa Clara since 1997. In his club coaching career, Howell coached more than 40 gymnasts to NCAA scholarships at 19 different universities, while leading Airborne gymnasts to 30 state championships. He coached two Junior Olympics national AA champions, four JO National Team members and two U.S. National Team members. Howell was named the 2004 Northern California Coach of the Year, the 2008 Region I Coach of the Year, and was appointed a Visa Championships coach in both 2008 and 2010. He is the founder of the Rhythm Attic Dance Studio, a Zumba fitness studio in Santa Clara.

Howell and wife Elisabeth Crandall-Howell have three children – Jacob, Noah and Greyson. He received an athletic scholarship at San Jose State University, graduating in 1999 with a B.S. in kinesiology.

### HOWELL FAST FACTS

#### COACHING HONORS

- 2x NACGC/W Region I Coach of the Year (2013, 2014)
- 2013 Pac-12 Coach of the Year
- 2010 VISA Championships Coach
- 2008 VISA Championships Coach
- 2008 Region I Coach of the Year
- 2004 Northern California Coach of the Year

#### COACHING HISTORY

- Head Coach, Cal (June 2012-present)
- Assistant Coach, Cal (June 2011-June 2012)
- Head Coach, Airborne Gymnastics (1997-2012)

#### EDUCATION

Graduated in 1999 with a bachelor's degree in kinesiology from San Jose State

#### ATHLETIC BACKGROUND

Attended San Jose State on an athletic scholarship for men's gymnastics

#### PERSONAL

Married to Elisabeth Crandall-Howell with three sons – Jacob, Noah and Greyson

### CALIFORNIA FINISHES UNDER HOWELL

YEAR	PAC-12	REGION	NCAA	RANKING
2013	6th	6th	--	28
2014	3rd	4th	-	16

### HOWELL'S COACHING RECORDS

#### Through Pac-12 Championships

YEAR	W	L	T	PCT.
2013	10	14	0	.417
2014	14	9	0	.609
<b>TOTAL</b>	<b>24</b>	<b>21</b>	<b>0</b>	<b>.533</b>

#### All Meetings

YEAR	W	L	T	PCT.
2013	10	19	0	.345
2014	16	12	0	.571
<b>TOTAL</b>	<b>26</b>	<b>31</b>	<b>0</b>	<b>.456</b>

## ASSOCIATE HEAD COACH ELISABETH CRANDALL-HOWELL



Elisabeth Crandall-Howell - a distinguished international brevet-level judge, an internationally experienced gymnast, and a collegiate All-American - joined the Cal family as an assistant coach in September 2012, and was elevated to associate head coach in July 2014.

Since joining the Cal women's gymnastics staff, Crandall-Howell has been integral in Cal's stellar ascent through the national rankings. The Bears finished the 2012 season ranked 49th nationally shortly before Crandall-Howell joined the program, and finished ranked 16th this season. Cal's 33-spot rise since 2012 marks the largest margin of improvement in NCAA gymnastics history, a feat only one other school has achieved (Maryland, 1997-99). Under her tutelage, Cal earned back-to-back NCAA Regional berths in 2013 and 2014, and this season the Bears sent individual gymnasts to the NCAA Championships for the first time since 2003.

As associate head coach, Crandall-Howell works with all aspects of the Cal women's gymnastics program, including fitness and nutrition, academic support and character development both in and out of the gym. Additionally, Crandall-Howell lends her expertise as an international brevet judge to help strengthen Cal's routines across the board.

In her two seasons at Cal, Crandall-Howell's leadership has been most evident on beam. After posting a 48.285 Regional Qualifying Score (RQS) on the event in 2012, Cal finished the past season with a 49.015 RQS and a 49.275 season-high on the event, which was also the program's second highest beam score in program history. In 2014, the Bears broke the 49.0 mark on beam for the first time since 2008, and continued to break it, posting four team scores of 49.0 or better. The beam team combined for nine of Cal's 33 event titles.

Crandall-Howell also helped the team make similar gains on floor, where the Bears improved from a 48.330 RQS in 2012 to a 49.155 RQS and 49.300 high in 2014. The 2014 squad claimed five floor titles and posted five floor scores of 9.90 or higher. The team matched the program's fourth-highest (49.300) and fifth-highest (49.275) floor scores in program history.

Individually, Crandall-Howell has been crucial in the development of 2013 Pac-12 Freshman of the Year Serena Leong, helping her to the third-highest beam score (9.90) and second-highest floor score (9.925) in program history, feats less than 10 Cal gymnasts have been able to accomplish. Jessica Howe wrapped up her freshman season with four beam titles and set a career-high 9.90 on the event alongside Leong.

Prior to her time at Cal, Crandall-Howell coached at the collegiate and club levels and spent six years as a member of the U.S. national team after which she was a student-athlete at BYU.

Just one of 16 active international brevet judging officials in the U.S., Crandall-Howell has judged each of the last three Olympic trials - including the 2012 trials in San Jose. From 2001-09, she was an official for U.S. Championships, and from 2006-07, she was the U.S. Apparatus Chairperson for uneven bars.

A seven-time U.S. National Team member from 1987-92, Crandall-Howell boasts a multitude of domestic and international accolades, travelling to Japan, Russia, Belgium, and Germany to represent the US. Most notably in 1991, she took home a gold medal at the USA Championships on uneven bars. Further, she also finished fourth on vault and eighth in the all-around. She was also a member of the silver medal winning team at the 1991 World Championships. Additionally, she finished 11th in the all-around at the 1992 Olympic trials. She medaled at the 1988 U.S. Championships on uneven bars and floor exercise, taking second in the all-around.

A full athletic scholarship student-athlete at Brigham Young University, Crandall-Howell was a two-time first-team All-American on the uneven bars. She helped the Cougars qualify to three NCAA Championships from 1994-96 and qualified on the individual level in 1993. In three of her four years in Provo, Utah, Crandall-Howell was the NCAA Regional uneven bars champion. She graduated in 1997 with a degree in physical education and health promotion.

She is married to Justin Howell, and they have three children - Jacob, Noah and Greyson.

### CRANDALL-HOWELL FAST FACTS

#### COACHING HISTORY

- Associate Head Coach, Cal (July 2014-present)
- Assistant Coach, Cal (September 2012-July 2014)
- Coach, Airborne Gymnastics (2007-12)
- Head Coach, International Gymnastics Centre (2004-06)
- Assistant Coach, Sacramento State (2001-03)
- Head Coach, Woodland Gymnastics (1998-2003)

#### EDUCATION

Graduated in 1997 with a bachelor's degree in physical education and health promotion from BYU.

#### ATHLETIC BACKGROUND

- Attended BYU on a full athletic scholarship for women's gymnastics
- 7x U.S. National Team Member (1987-92)

#### PERSONAL

Married to Justin Howell with three sons -- Jacob, Noah and Greyson

## VOLUNTEER COACH JESSA HANSEN



Jessa Hansen is in her first year with the Cal women's gymnastics program as a volunteer assistant coach following four years as a highly decorated gymnast at the University of Iowa.

A four-year letterwinner at Iowa, Hansen was a two-time All-Big Ten honoree, plus an Academic All-Big Ten selection and NACGC Scholastic All-American in 2010, 2011 and 2012.

Along with her gymnastics, Hansen was a representative on the Iowa Student-Athlete Advisory Committee from 2009-12 and Dean's List member for each spring and fall semester from 2009-11. She received the Big Ten Sportsmanship Award in 2010 and 2011, and the Big Ten Distinguished Scholar Award in 2011.

Prior to her time at Iowa, Hansen trained at Chow's Gymnastics and Dance Institute from 1998-2008, where she was coached by 2008 Olympic head coach Liang Chow and his wife Liwen Zhuang, and trained with Beijing Olympics balance beam champion Shawn Johnson. Hansen was a three-time Junior Olympic National Qualifier, the Level 10 Regional Floor Champion in 2008 and 2008 and the 2006 Level 10 State All-Around Champion.

Hansen graduated from Iowa in 2012 with a bachelor's degree in journalism/mass communication and minors in studio art and sport studies.

## VOLUNTEER COACH JEFFREY LANGENSTEIN



A former Cal student-athlete and experienced dancer, Jeffrey Langenstein joins the Golden Bears as the team's volunteer coach and floor choreographer.

Langenstein plays an integral role in directing the dance elements of Cal's floor routines, and in 2014 helped the Bears to a 49.155 Regional Qualifying Score (RQS). The Bears finished the season ranked

21st in the country on the event, up from No. 23 with a 49.120 RQS in 2013.

As a Golden Bear men's gymnast, Langenstein earned four varsity letters while specializing in the floor, still rings, vault and parallel bars events. He was consistently ranked a top performer on floor and vault within the MPSF conference and nationally.

After a rough fall semester during his freshman year, Langenstein found an outlet for his creativity and energy in dancing. He joined Danceworx in the spring, where he was exposed to the greater Berkeley dance community. Since that time, Langenstein has also been involved in The [M]ovement, TrueLement, THRIVE Dance Co., Pilipino Culture Night, Manly Men, Ty-Trannysaurus Rex and Femme Fatale. A jack-of-all-trades when it comes to dance, Langenstein has experience with everything from hip hop to jazz to lyrical and contemporary styles. He was involved in nearly every aspect of dance, from choreographing routines to facilitating practices and holding leadership meetings to planning events and showcases.

Outside of the gym, Langenstein is passionate about the community, serving as a member of the Golden Bear Advisory Committee for student-athletes. He represented Cal at the annual Pac-12 student-athlete advisory committee in the fall of 2013.

Langenstein graduated from Cal with a bachelor's degree in Interdisciplinary Studies, focusing primarily on globalization and consumer behavior, and also obtained a minor in dance and performance studies. In the future, Langenstein would like to focus on sports management or work as editor-in-chief for a publication such as GQ or Vogue.

# GOLDEN BEAR GYMNAST BIO: ISABELLE CASTILLO



**5-1 • Sophomore • AA**  
**Newark, Calif. (Newark Memorial)**  
**California Gymnastics Academy**

<b>COLLEGIATE BESTS</b>		
<b>EVENT</b>	<b>SCORE</b>	<b>DATE</b>
<b>Vault</b>	--	--
<b>Uneven Bars</b>	--	--
<b>Balance Beam</b>	--	--
<b>Floor Exercise</b>	--	--
<b>All-Around</b>	--	--

**AS A FRESHMAN (2014):**

Did not compete...sidelined due to injury for most of the season

**HIGH SCHOOL/CLUB:**

2011 Junior Olympic National Team Member...Placed second all-around at the 2011 JO Nationals, including a third-place finish on beam plus seventh on bars and ninth on vault... Regional all-around, beam and floor champion in 2011 and third on vault...Was the Level 10 NorCal State vault, bars and all-around champion along with second place on floor...Fourth on beam and 10th all-around at 2010 JO Nationals...the 2010 regional all-around and floor champion and second on uneven bars...Level 10 NorCal State 2nd place finisher on floor and all-around, third on the beam...Competed at the Western Nationals in 2009, finish second on bars, beam and floor and claiming the all-around title...the 2009 regional beam champion and second on bars and all around...Level 9 NorCal State beam and all-around champion (2009) and second on vault, bars and floor...Trained with California Gymnastics Academy under Neal Gallant and Rod Radunzel...Team state champion with the 2012 and 2010 NorCal Level 10 club team...2011 Region 1 Super Team was the JO National team champion...Finished second in the state with the NorCal Level 10 club team in 2011, and second in the state with the NorCal Level 9 club team in 2009...Finished in the Top 10 of Newark Memorial High School's graduating class...a California Scholastic Federation (CSF) lifetime member...Was on the Principal's Honor Roll from 2009-13 and an AP Scholar...Received Outstanding Student Awards in Modern Languages, Science and Math...2012 finalist for Deloitte Positive Coaching Alliance's Triple-Impact Competitor scholarship

**PERSONAL:**

Lists her best sports moment as becoming a 2011 JO National Team member and overcoming injuries in 2011 and 2013...En-

joys running, shopping, reading, watching movies and spending time with friends and family...Parents are Bernie and Cindy - both are Cal graduates ('87)...Has one sister - Amanda

**MAJOR:**

Undeclared but considering biology, public health or cognitive science - would eventually like to practice sports medicine as a doctor or physical therapist

## GOLDEN BEAR GYMNAST BIO: ZOE DRAGHI



**5-1 • Sophomore • AA**  
**Long Beach, Calif. (Wilson)**  
**Wildfire Gymnastics**

### COLLEGIATE BESTS

EVENT	SCORE	DATE
Vault	--	--
Uneven Bars	--	--
Balance Beam	--	--
Floor Exercise	9.775	3-3-14 at Stanford
All-Around	--	--

### AS A FRESHMAN (2014):

Voted Most Improved at annual team awards banquet... Appeared in four meets, competing on floor...Made her season debut on floor against Stanford (3/3), posting a 9.775 for a career-high score on the event

### HIGH SCHOOL/CLUB:

2013 Level 10 State and Region 1 Qualifier...2012 Junior Olympic National and Regional qualifier...Second place on floor in 2012 Level 10 state competition...Claimed first on beam and floor at the 2011 Cancun Classic...2010 Level 10 floor champion and second on beam and a Level 10 Regional qualifier...2009 Level 9 state beam champion, second place all-around...second place on floor at Level 9 Region 1 competition in 2009...second on beam and third all-around at 2009 Level 9 Western Nationals...Coached by Rick Watson at Wildfire Gymnastics...Graduated as a distinguished scholar and in the top 15 percent of her graduating class

### PERSONAL:

Enjoys traveling and surfing...Parents are Ric and Naomi...Has two siblings – Riley and Samantha

### MAJOR:

Psychology – would like to be a behavioral analyst

## GOLDEN BEAR GYMNAST BIO: ALICIA GALLARZO



**5-3 • Freshman • AA**  
**Burbank, Calif. (Burbank)**  
**Waller's GymJam**

### COLLEGIATE BESTS

EVENT	SCORE	DATE
<b>Vault</b>	--	--
<b>Uneven Bars</b>	--	--
<b>Balance Beam</b>	--	--
<b>Floor Exercise</b>	--	--
<b>All-Around</b>	--	--

### HIGH SCHOOL/CLUB:

MVP of her Waller's Gym Jam Academy squad in 2011 and 2012...Ninth on balance beam at 2013 JO Nationals...Second all-around and third on vault at the 2013 Region I Championships...2012 Level 10 state uneven bar champion, and second on vault, floor and all-around...Claimed the beam title at the Monarchs Invitational in 2012...Second on vault at the 2012 SoCal State meet...Champion on beam and fifth all-around at the 2012 Elite Qualifier...2010 Level 10 state all-around and beam champion, and third on bars...Recognized by her club team with the Heart of a Champion award in 2011 for her self-confidence, determination and focus on vault...Coached by 1992 U.S. Olympian Chris Waller

### PERSONAL:

Hobbies include arts and crafts and DIY projects...Also took guitar lessons...Parents are Marclino and Josie...Has one sister - Ariana

## GOLDEN BEAR GYMNAST BIO: KRISTI HEYMANN



**5-3 • Junior • AA**  
**Los Gatos, Calif. (Los Gatos)**  
**Airborne Gymnastics**

### COLLEGIATE BESTS

EVENT	SCORE	DATE
<b>Vault</b>	9.875	2x, last 3-7-14 at Kentucky
<b>Uneven Bars</b>	--	--
<b>Balance Beam</b>	9.725	3-1-13 at Stanford, Oregon State
<b>Floor Exercise</b>	9.825	4x, last 3-1-13 at Stanford, Oregon State
<b>All-Around</b>	--	--

### AS A SOPHOMORE (2014):

Appeared in six vault lineups...Matched a career-high 9.875 on vault at Kentucky...Made her season debut on vault against Washington & Sac State (2/22), rejoining the regular vault lineup after nursing an injury at the beginning of the season

### AS A FRESHMAN (2013):

Finished in the Top 3 on an event twice in 2013, tying for 2nd with a 9.825 on vault vs. UC Davis (1/11) and tying for third on vault with the same score vs. San Jose State & Brown (2/18)... Set a career-high 9.875 on vault vs. Nebraska (3/16), which also ties for the fourth-highest total in program history...Tallied a career-high 9.725 on beam vs. Stanford & Oregon State (3/1)... Set her career-high 9.825 floor exercise score vs. UC Davis (1/11) and matched it 3 times (1/26, 2/18 & 3/1)...Appeared in every vault lineup of 2013 and all but one floor event

### HIGH SCHOOL/CLUB:

Earned 2nd place in the state on vault, bars, and all around in 2009 for level 9, also was second place all around in the western regionals ... in 2010, was level 9 state champion on vault, beam, floor, and all around, while earning second place on bars ... was a member of the Most Valuable Bay Aerials team in 2008 and 2009 ... in 2012, was the champion at the National Invitational Tournament on floor, while placing third on vault and fourth and all around.

### PERSONAL:

Parents are Steve and Nancy

### MAJOR:

Undeclared

## GOLDEN BEAR GYMNAST BIO: DANA HO



**5-3 • Sophomore • AA**  
**Plano, Texas (Plano East)**  
**World Olympic Gymnastics Academy**

### COLLEGIATE BESTS

EVENT	SCORE	DATE
<b>Vault</b>	--	--
<b>Uneven Bars</b>	--	--
<b>Balance Beam</b>	9.65	3-7-14 at Kentucky
<b>Floor Exercise</b>	--	--
<b>All-Around</b>	--	--

### AS A FRESHMAN (2014):

Appeared in two beam lineups...Set her personal best 9.65 on beam at Kentucky (3/7)...Made a 9.50 career debut on beam against Stanford (3/3)

### HIGH SCHOOL/CLUB:

Five-time qualifier of Junior Olympic National Championship (2008, 2010-2013) and two-time trifecta champion...2013 Region 3 beam champion...In 2012, placed 10th All-Around at JO National...all-around, bars and beam champion at 2012 Region 3 Championship...Beam champion, second all-Around, bars and floor at the Texas State Championship...Was second all-around and on floor and third on beam at 2011 Regionals...2011 all-around, vault and bars champion at state... In 2010, placed seventh All-Around and third on beam at JO National...2009 Regional floor champion and second all-around at state...Claimed 11th on bars at 2008 J.O. National...2008 Regional beam champion...Helped Region 3 team place first at JO Nationals in 2010 and 2012, and third in 2013....Trained at World Olympic Gymnastics Academy under Laurent Landi and Cecile Canqueteau-Landi...Helped WOGA win team first at Houston National Invitational in 2012...Graduated with honors from Plano East Senior High School in Texas.

### PERSONAL:

Parents are Daniel Ho and Hanna Tong...Has one sister - Jessie, who started college at the Texas Math and Science Academy (TAMS) of the University of North Texas at 15

### MAJOR:

Business

## GOLDEN BEAR GYMNAST BIO: JESSICA HOWE



**5-3 • Sophomore • AA**  
**Plano, Texas (Spring Creek Academy)**  
**World Olympic Gymnastics Academy**

### COLLEGIATE BESTS

EVENT	SCORE	DATE
<b>Vault</b>	9.875	2-14-14 at Sacramento State, SJSU
<b>Uneven Bars</b>	9.85	2-14-14 at Sacramento State, SJSU
<b>Balance Beam</b>	9.90	2x, last 3-22-14 at Pac-12 Championships
<b>Floor Exercise</b>	9.85	3x, last 3-22-14 at Pac-12 Championships
<b>All-Around</b>	39.350	3-15-14 vs. UC Davis

### CAREER HIGHLIGHTS

- 2x Pac-12 Freshman of the Week (3/18 and 2/18/14)

### AS A FRESHMAN (2014):

Appeared in every beam and floor lineup, plus seven vault and 11 bar appearances...Competed all-around in seven meets.. Owns five event titles and 12 top-three finishes...Awarded Pac-12 Freshman of the Week for the first time on Feb. 18 and again on March 18...Matched her career-high 9.90 on beam at the Pac-12 Championships (3/22) and 9.85 high on floor...Won her fourth beam title of the season against UC Davis (3.14) and also won the all-around with a career-high 39.350...Claimed her first all-around title against Sac State/SJSU (2/14), also posting career-highs in three of the four events...Owns three beam titles this season - vs. UCLA (1/31), at ASU (1/24) and vs. Utah (1/17)...Set a career-high 9.90 on beam against UCLA (1/31) and made her debut in the all-around, adding a 9.825 vault debut to her repertoire...Set new season-highs on bars and floor vs Utah...First appearance in the uneven bars lineup came at Denver (1/11), where she scored a 9.525...Made her Golden Bear debut at the NorCal Meet (1/5) as one of four freshman to compete, earning a 9.70 on beam and a 9.75 on floor

### HIGH SCHOOL/CLUB:

Three-time Level 10 Junior Olympic qualifier (2009, 2010, 2013)... Qualified for Senior Elite level in 2011 at the Disney Elite Qualifier Optionals with a 53.00...Seventh all-around with a 54.05 at 2011 US Covergirl Classic...Competed at the 2011 US Nationals (VISA Championships) with a prelim score of 50.60 and final score of 52.60 for 12th all-around with a combined score of 103.20...Claimed fourth all-around at the 2013 Level 10 Regionals... Broke her wrist in 2012 and was unable to compete for seven months...Second all-around at the 2011 American Classic...Helped her Region 3 team to a first-place finish at 2010 JO Nationals...The floor and all-around champion at the 2010 Level 10 JO Nationals, and second on

vault and beam...First on beam and floor and second in all-around at the 2010 Level 10 Regionals...Claimed the vault title and third place in all-around at the 2010 Level 10 Texas State meet...Third all-around with a 37.7 at the 2009 Level 10 Texas State Meet...Balance beam and uneven bars champion at 2009 Level 10 Regionals, and second all-around...rained at the World Olympic Gymnastics Academy and coached by Valeri Liukin (father and coach of Olympic champion Nastia Liukin) and Natalya Marakova

### PERSONAL:

Hobbies are shopping, swimming and reading...Parents are Mark and Jenny...Has one sister, Emily, also a gymnast...Her grandfather, Dick Casper, ran on the Cal track team.

### MAJOR:

Undeclared

## GOLDEN BEAR GYMNAST BIO: MADDIE KRATZKE



**5-4 • Senior • AA**  
**Seattle, Wash.(Edmonds Woodway)**  
**Seattle Gymnastics Academy**

### COLLEGIATE BESTS

EVENT	SCORE	DATE
<b>Vault</b>	9.75	4-6-13 at NCAA Corvallis Regional
<b>Uneven Bars</b>	9.725	3x, last 1-17-14 vs. Utah
<b>Balance Beam</b>	8.875	1-27-11 vs. UC Davis, Seattle Pacific
<b>Floor Exercise</b>	--	--
<b>All-Around</b>	--	--

### AS A SENIOR (2015):

Medically retired but still plays an integral leadership role on the team.

### AS A JUNIOR (2014):

Voted 'Most Inspirational' at the team's annual banquet...A team captain for 2014...Competed in four meets before an injury sidelined her for the rest of the season...Before her injury, set a career-high 9.80 on vault at ASU (1/24)...Set career-high beam vs. Utah (1/17) and matched her career-high on bars

### AS A SOPHOMORE (2013):

Set a career-high 9.75 on the vault apparatus at the NCAA Regional competition in Corvallis, Ore. (4/6)...Also set a new career-high on the uneven bars vs. UCLA, Michigan & Iowa State with a 9.725 (3/10) and matched that vs. Nebraska (3/16)... Competed in two vault lineups and eight bars lineups

### AS A FRESHMAN (2012):

Competed in two meets for the Golden Bears on three different events... Earned season bests of 9.725 on vault and 8.875 on beam at UC Davis (Jan. 27)... Earned season best of 9.000 against UCLA (Jan. 15).

### HIGH SCHOOL/CLUB:

Junior Olympic National Qualifier in 2009 and 2011 (didn't compete in 2010 due to knee injury) ... placed seventh on the beam and 16th in the all-around at the 2008 Western National Championships ... three-year captain of her club team at Seattle Gymnastics Academy ... attended Edmonds Woodway High School in Edmonds, Wash.

### PERSONAL:

Parents are Steve and Myla ... brother, Nick, plays soccer at Northwest Christian University

### MAJOR:

Undeclared

## GOLDEN BEAR GYMNAST BIO: SERENA LEONG



**5-0 • Junior • V, BB, FX**  
**San Ramon, Calif. (Chinese Christian)**  
**Edge Gymnastics**

### COLLEGIATE BESTS

EVENT	SCORE	DATE
<b>Vault</b>	9.925	2-14-14 at Sacramento State, SJSU
<b>Uneven Bars</b>	--	--
<b>Balance Beam</b>	9.90	2x, last 3-22-14 at Pac-12 Championships
<b>Floor Exercise</b>	9.925	2-14-14 at Sacramento State, SJSU
<b>All-Around</b>	--	--

### CAREER HIGHLIGHTS

- Pac-12 All-Academic First Team (2014)
- Pac-12 Freshman of the Year (2013)
- NACGC/W Scholastic All-American (2013)

### AS A SOPHOMORE (2014):

Pac-12 All-Academic First Team member...Racked up nine event titles with 15 top-three finishes...Matched her career-high 9.90 on beam at the Pac-12 Championships (3/22)...Won vault and floor against UC Davis (3/15)...Champion on all three of the events she competed in (vault, beam, floor) at the Washington & Sac State tri-meet (2/22), where she set a career-high 9.90 on beam...Claimed the vault and floor titles at Sac State/SJSU (2/14) with a career-high 9.925 on both events, which also matches Cal's second-highest individual event score in the program record books...Set a new career-high on beam with 9.85 vs. Utah (1/17)...Vault champion with a 9.825 at the NorCal Meet (1/5)...Appeared in every vault and floor lineup, and 11 out of 12 beam lineups

### AS A FRESHMAN (2013):

Cal's first-ever Pac-12 Freshman/Newcomer of the Year recipient...NACGCW Scholastic All-America member...Claimed eight Top 3 finishes, including six 2nd place and two 3rd place...Scored a 9.9 on vault twice in 2013, vs. Stanford & Oregon State (3/1) and at the NCAA Corvallis Regional (4/6), which matches the third-highest score on vault in program history...Registered a career-high 9.775 on balance beam three times (1/26, 2/3 & 3/16)...Performed two career-high 9.90 floor exercises vs. UC Davis (1/11) and Stanford (1/26), which ties for the third-highest score in program history...Competed in every vault and floor lineup and all but one beam lineup

### HIGH SCHOOL/CLUB:

Was the 2012 California Level 10 Champion on the balance beam ... In 2011, was the California Level 10 Champion on floor, placed 5th AA at regionals, was a Region 1 team member, and a qualifier for Nationals ... Her 2011 Region 1 Super Team was Champions, and placed 5th at the state championships ... In 2010, was a Region 1nd Alternate, a JO-NIT qualifier, and placed 2nd on both vault and floor at NIT ... In 2009, was a member of the regional team and a nationals qualifier ... attended Chinese Christian Schools in Alameda, Calif where she was a four year earner of the Scholastic Achievement Award (2009-2012), an AP Scholar, earned the National Merit Commendation, and won the Science Bowl school championship in 2010.

### PERSONAL:

Parents are Stan and Sandra ... cousin, Alex Cushing, was on Cal's swim team

### MAJOR:

Bioengineering

## GOLDEN BEAR GYMNAST BIO: CHARLIE OWENS



**5-4 • Sophomore • AA**  
**Alta Loma, Calif. (Los Osos)**  
**Charter Oak Gymnastics**

### COLLEGIATE BESTS

EVENT	SCORE	DATE
<b>Vault</b>	9.85	2-14-14 at Sacramento State, SJSU
<b>Uneven Bars</b>	9.85	2x, last 3-7-14 at Kentucky
<b>Balance Beam</b>	9.875	3-3-14 at Stanford
<b>Floor Exercise</b>	9.875	3-7-14 at Kentucky
<b>All-Around</b>	39.250	2-14-14 at Sacramento State, SJSU

### CAREER HIGHLIGHTS

- All-Pac-12 First Team (2014)
- 2x Pac-12 Freshman of the Week (1/28 and 1/7/14)

### AS A FRESHMAN (2014):

Voted to the All-Pac-12 First Team...Claimed two event titles with 11 top-three finishes in 2014...All-Around in every single meet in 2014...Awarded her second Pac-12 Freshman of the Week honor on Jan. 28, and the second FOTW honor for the Cal program...Beam champion for the first time at Stanford (3/3) after posting a career-high 9.875...Won her first all-around title at ASU (1/24) with a career-high 39.175 performance...Claimed second in the all-around against Denver (1/11)...Earned Cal's first-ever Pac-12 Freshman/Newcomer of the Week award for her all-around performance at the NorCal Meet (1/5) in her Golden Bear debut, where she finished 2nd with a 38.950

### HIGH SCHOOL/CLUB:

Four-time Junior Olympic Qualifier...Competed at the 2013 Women's JO Level 10 National Championships in Minneapolis, Minn., finishing third on the uneven bars and eighth on floor..2013 state vault champion and regional beam, floor and all-around champion...Qualified for the 2012 Nastia Liukin Cup and was the 2012 state vault, bars, floor and all-around champion, as well as regional vault and floor champion...First on all-around, vault, uneven bars and floor and second on the beam at the 2012 Gliders Invitational in Ontario, Calif...Sixth in the all-around at JO Nationals in 2011...Claimed the title in all four events and the all-around at the 2011 Malibu Challenge... Trained with Charter Oak Gymnastics club and coached by Stephen and Beth Rybacki

### PERSONAL:

Enjoys cooking, baking and shopping...Parents are Buzz and Tammy

### MAJOR:

Cell and Developmental Biology – would like to be an anesthesiologist

## GOLDEN BEAR GYMNAST BIO: DESIREE PALOMARES



**4-11 • Sophomore • AA**  
**San Dimas, Calif. (San Dimas)**  
**Gliders Gymnastics**

### COLLEGIATE BESTS

EVENT	SCORE	DATE
<b>Vault</b>	--	--
<b>Uneven Bars</b>	--	--
<b>Balance Beam</b>	9.85	3-22-14 at Pac-12 Championships
<b>Floor Exercise</b>	9.80	2x, last 2-22-14 vs. UW, Sacramento State
<b>All-Around</b>	--	--

### AS A FRESHMAN (2014):

Appeared in 11 of 12 beam lineups and six floor lineups...Set a career-high 9.85 on beam at the Pac-12 Championships (3/22)...Claimed the beam title in a triangular with Sac State and San Jose State (2/14) with a 9.825...Competed on both beam and floor against Utah (1/17), setting a new career-high on beam and debuting on floor with a 9.80...Debuted on beam at the NorCal Meet (1/5), posting a 9.725

### HIGH SCHOOL/CLUB:

2013 Region I all-around and balance beam champion...Also a 2011 regional all-around champion...2011 national beam champion and the 2010, 2011 and 2013 state all-around champion...Trained with Gliders Gymnastics and coached by Stephen and Beth Rybacki...Graduated from San Dimas High with the Gold Star Award, given to students with a grade point average of 3.5 or higher and at least two extracurricular activities

### PERSONAL:

Enjoys snowboarding...Parents are Rene and Angela...Has three siblings – Jeanine (serves in the U.S. Navy), Anthony and Aliyah.

### MAJOR:

Psychology – would like to become a clinical psychologist

## GOLDEN BEAR GYMNAST BIO: CRYSTAL PAZ



**5-1 • Senior • V, BB, FX**  
**Fremont, Calif. (Moreau Catholic)**  
**California Gymnastics Academy**

### COLLEGIATE BESTS

EVENT	SCORE	DATE
<b>Vault</b>	9.825	3-9-12 vs. Boise State
<b>Uneven Bars</b>	--	--
<b>Balance Beam</b>	9.875	2x, last 2-22-14 vs. UW, Sacramento State
<b>Floor Exercise</b>	9.85	4x, last 3-22-14 at Pac-12 Championships
<b>All-Around</b>	--	--

### AS A JUNIOR (2014):

Competed in every floor lineup of 2014, with six vault appearances eight beam appearances...Turned in three top-three finishes with one event title...Matched her career-high 9.85 on floor thrice in 2014, including a clutch performance at the Pac-12 Championships to help Cal clinch a third-place finish...Matched her career-high 9.875 on beam vs. Washington and Sac State (2/22...Beam champion in a tri meet with Sac State and San Jose State (2/14)...

### AS A SOPHOMORE (2013):

Had two Top 3 finishes in 2013..Tied for 2nd on balance beam vs. Washington, UC Davis & UIC with 9.75 (1/18) and tied for third on balance beam vs. Nebraska (3/16) with a 9.875... Set a season-high on vault with 9.775 vs. UC Davis (1/11)... Set new career-high totals on beam with a 9.875 vs. Nebraska (3/16) and floor with a 9.850 vs. Stanford & Oregon State (3/1)...Named "Most Improved" at the team's annual awards banquet...Competed in every beam lineup and all but one floor lineup...Also competed on vault in six meets

### AS A FRESHMAN (2012):

Competed in every meet on vault, beam, and floor... earned a season best of 9.825 on vault and 9.800 on beam at Boise State (Mar. 9)... earned season best of 9.700 on floor against Washington (Mar. 18).

### HIGH SCHOOL/CLUB:

Named Most Valuable Gymnast in 2010 by the California Gymnastics Academy where she trained ... member of the Western National Team ... captured first place on the bars and in the all-around and second place in the vault and on the balance beam at the Western Nationals in 2010 ... champion in the vault, and on the bars and balance beam and in the all-around at the 2010 regionals ... attended Moreau Catholic High

School.

### PERSONAL:

Daughter of Celeste Paz

### MAJOR:

Undeclared

## GOLDEN BEAR GYMNAST BIO: EMILY RICHARDSON



**5-1 • Sophomore • AA**  
**Fort Smith, Ark. (Liberty)**  
**World Olympic Gymnastics Academy**

### COLLEGIATE BESTS

EVENT	SCORE	DATE
<b>Vault</b>	--	--
<b>Uneven Bars</b>	9.80	2x, last 3-3-14 at Stanford
<b>Balance Beam</b>	--	--
<b>Floor Exercise</b>	--	--
<b>All-Around</b>	--	--

### AS A FRESHMAN (2014):

Appeared in all but one bars lineup...Set a career-high 9.80 on bars against Sac State & SJSU (2/14), and matched it at Stanford (3/3)...Debuted on bars at the NorCal Meet (1/5), posting a 9.50 after joining the Cal team in December

### HIGH SCHOOL/CLUB:

First alternate to Junior Olympic Nationals in 2013 and 2012 with an eight place all-around finish at 2013 and 2012 Regionals... Also finished fourth in Level 10 vault, third on bars and seventh on floor at 2013 Regionals...Claimed seventh on vault and floor and eighth on bars and all-around at 2013 state competition... Won vault, floor and all-around at 2013 WOGA Classic...Vault champion at 2012 Regionals, and fifth on bars...Took fifth on vault, bars and beam at 2012 state competition and eighth all-around...Claimed uneven bars and all-around title at WOGA Classic in 2012, and first all-around and bars at the Texas Prime Meet...Injured in 2011...Fourth on bars, fifth on vault and 10th all-around at 2010 Regionals...Claimed the beam titles at 2009 and 2010 state competition...Qualified for Westerns in 2008 but could not compete due to injury...Trained at the World Olympic Gymnastics Academy (WOGA) under Valeri Liukin (father and coach of Olympic champion Nastia Liukin) and Natalya Maer... Attended Liberty High School in Frisco, Texas, where she was a member of the American Sign Language Honors Society

### PERSONAL:

Moved to Texas from hometown of Fort Smith, Ark. to train at WOGA, dividing her time between two homes in two different states...Enjoys crafting, volunteering and spending time with friends and family...Parents are Derrick and Janet...Has two younger siblings – Olivia and Adam...Father, Derrick, played on the University of Arkansas baseball team

### MAJOR:

Public Health – would like to work as a physical therapist

## GOLDEN BEAR GYMNAST BIO: ARIANNA ROBINSON



**5-2 • Freshman • AA**  
**Chantilly, Va. (Freedom)**  
**Hill's Gymnastics**

### COLLEGIATE BESTS

EVENT	SCORE	DATE
<b>Vault</b>	--	--
<b>Uneven Bars</b>	--	--
<b>Balance Beam</b>	--	--
<b>Floor Exercise</b>	--	--
<b>All-Around</b>	--	--

### HIGH SCHOOL/CLUB:

Trained with Kelli Hill at Hill's Gymnastics...Seventh all-around at the National Invitation Tournament in 2014 and third on beam...Fourth all-around at Maryland States in 2014...Attended Freedom High School in South Riding, Va...AP Scholar and a member of the National Art Honor Society

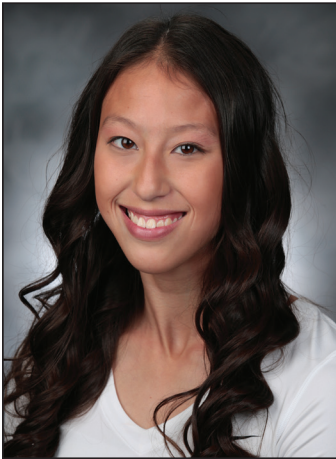
### PERSONAL:

Worked for her aunt, who is an author, as a consultant on how teens respond to certain situations...Also worked on her aunt's blog and serves as her assistant, a role in which she has the opportunity to write freely about topics she is interested in... Arianna has had some of her own entries published in her aunt's past books...Enjoys creative writing and art...Parents are Robby and Damita...Father Robby attended Virginia State and VCU, and mother Damita attended Michigan and Northwestern...Has one older brother, Chris, who attends Syracuse, and a younger sister, Mikayla, who is also a gymnast...

### MAJOR:

Undeclared - would like to be an author

## GOLDEN BEAR GYMNAST BIO: YULEEN STERNBERG



**5-3 • Freshman • AA**  
**Berkeley, Calif. (Berkeley)**  
**Head Over Heels Athletic Arts**

### COLLEGIATE BESTS

EVENT	SCORE	DATE
<b>Vault</b>	--	--
<b>Uneven Bars</b>	--	--
<b>Balance Beam</b>	--	--
<b>Floor Exercise</b>	--	--
<b>All-Around</b>	--	--

### HIGH SCHOOL/CLUB:

Level 10 gymnast...Trained at Head Over Heels Athletic Arts from 2013-14...was named "Uneven Bars Connoisseur" at the 2014 Head Over Heels team banquet... Team captain for her Head Over Heels team but only competed the first three meets of the season due to injury...Best result in 2014 was 36.375 all-around score...From 2011-12, trained at Waverley Gymnastics Centre in Australia and competed in the Australian Championships in 2012...Best result with Waverley was a 50.2 all-around (FIG scoring)...Also trained at Chukyo Gymnastics Club in Japan (2006-11) and competed in the All-Japan Junior Competition in 2010...Attended Berkeley High School, where she was a member of the honor roll for the Academy of Medicine and Public Service (AMPS)

### PERSONAL:

Lived in Japan and Australia during high school and adapted to the various cultures, Japanese language and environments... Enjoys watching movies and browsing YouTube...Parents are Hal Sternberg and Junko Takezoe

### MAJOR:

Undeclared – is considering becoming a physical therapist

## GOLDEN BEAR GYMNAST BIO: AMBER TAKARA



**5-1 • Sophomore • AA**  
**Tacoma, Wash. (Stadium)**  
**Auburn Gymnastics Center**

### COLLEGIATE BESTS

EVENT	SCORE	DATE
<b>Vault</b>	--	--
<b>Uneven Bars</b>	--	--
<b>Balance Beam</b>	--	--
<b>Floor Exercise</b>	--	--
<b>All-Around</b>	--	--

### AS A FRESHMAN (2014):

Did not compete in 2014 due to injury

### HIGH SCHOOL/CLUB:

Named the Most Outstanding (2012) and Most Inspirational (2013) of her Auburn Gymnastics Center club team...Was a member of the three-time state championship team in 2011, 2012 and 2013...First-place in the all-around at the Charity Choice Invitational and an alternate for the Nastia Liukin Cup... Also claimed first in the all-around at the Washington State Championships and qualified for an international meet in Costa Rica...2013 Junior Olympic National Qualifier...Second in the all-around at the Classic Rock Invitational...First in the all-around at the Charity Choice and Classic Rock invitationals in 2012, and an alternate for the Nastia Liukin Cup...First in the all-around at regional championships...second in all-around at the state championships...Finished 13th all-around at JO Nationals... Competed in the 2011 All-American Invitational, where she finished first in the all-around...Also Claimed second all-around at the Crystal Cup and third all-around at Byers Invitational before breaking her arm...2010 JO National Qualifier and third in the all-around at the Long Beach Invitational...Coached by Brent Phelps and Peter Flores...Was a varsity letterman in cross country at Stadium High School in 2012...Was a member of the honor society and received the Superintendent's Award and an honor cord for her GPA.

### PERSONAL:

Interests include running, longboarding and traveling...Broke her hand during sophomore year of high school and had to have two screws put in to pin it back together...Parents are Scott and Aileen...Has one sister - Alexis

### MAJOR:

Undeclared - considering a career as a pharmacist, brain surgeon or aerospace engineer

## GOLDEN BEAR GYMNAST BIO: JORDAN WIDENER



**5-6 • Junior • AA**  
**Snohomish, Wash. (Glacier Peak)**  
**Leading Edge Gymnastics Academy**

### COLLEGIATE BESTS

EVENT	SCORE	DATE
<b>Vault</b>	--	--
<b>Uneven Bars</b>	9.825	2x, last 3-23-13 at Pac-12 Championships
<b>Balance Beam</b>	9.4	1-18-13 at Washington
<b>Floor Exercise</b>	9.725	3-23-13 at Pac-12 Championships
<b>All-Around</b>	--	--

### AS A SOPHOMORE (2014):

Did not compete in 2014 due to a broken foot

### AS A FRESHMAN (2013):

Set a career-high 9.825 on bars vs. Stanford & Oregon State (3/1), later matched the score at the Pac-12 Championships (3/23)...Career-high 9.40 on beam posted vs. Washington, UC Davis & UIC (1/18)...Registered a 9.725 at the Pac-12 Championships (3/23) for a new career-high total...Named "Most Improved" at the team's annual awards banquet... Entered all but two bars lineups of the season...Also competed in two beam and four floor events

### HIGH SCHOOL/CLUB:

Was state, regional, and western level 9 floor champion ... attended Glacier Peak High School in Snohomish, Wash.

### PERSONAL:

Parents are Ross and Jeanette ... Mother, Jeanette was a professional skier

### MAJOR:

Undeclared – considering molecular and cell biology

## GOLDEN BEAR GYMNAST BIO: TONI-ANN WILLIAMS



**5-1 • Freshman • AA**

**Randallstown, Md. (Roland Park Country Day School)**

**United Gymnastix**

### COLLEGIATE BESTS

EVENT	SCORE	DATE
<b>Vault</b>	--	--
<b>Uneven Bars</b>	--	--
<b>Balance Beam</b>	--	--
<b>Floor Exercise</b>	--	--
<b>All-Around</b>	--	--

### HIGH SCHOOL/CLUB:

Member of the Jamaica National Team in 2011, 2012 & 2013...2013 & 2011 World Championships participant... Maryland state team member from 2009-13, claiming third as a team in 2013...2013 Level 10 Regional all-around champion...Level 10 State all-around champion in 2012 & 2011... Region 7 team member in 2011, claiming first on beam and third all-around...2010 JO National Invitational Tournament Champion...Has competed in Montreal, Canada, Tokyo, Japan and Belgium...Trained at United Gymnastix with coach Mladen Stefanov...Attended Roland Park Country School...Co-President of her school's Student Diversity Committee...Member of the Roses Repertory Dance Company

### PERSONAL:

Suffered a deep hand rip at the 2011 World Championships that prevented her from competing on bars and diminished her chances of qualifying for the 2012 Olympic Games... Spent summer of 2013 by hosting other Jamaican athletes in Maryland and training with them at her gym...Hobbies include hanging out with her sisters, watching Netflix, reading and listening to music...Parents are Tony and Marlene...Has three siblings – Maya, Kristine and Zitafa

### MAJOR:

Undeclared

## 2014 TEAM RESULTS (16-12 OVERALL, 6-7 PAC-12)

DATE	MEET	VAULT	BARS	BEAM	FLOOR	TOTAL	RECORD/ RESULT
1/5	<b>NORCAL MEET AT SACRAMENTO STATE</b>						<b>3-1 (0-1 PAC-12)</b>
	<b>Cal</b>	<b>48.775</b>	<b>48.675</b>	<b>48.750</b>	<b>48.450</b>	<b>194.650</b>	<b>2nd</b>
	Sacramento State	48.675	48.350	49.050	48.325	194.400	W (3rd)
	San Jose State	48.300	48.650	48.250	48.125	193.325	W (5th)
	Stanford	48.875	49.050	48.700	48.200	194.825	L (1st)
	UC Davis	48.100	48.425	48.300	48.625	193.450	W (4th)
1/11	<b>DUAL MEET AT DENVER</b>						<b>3-2 (0-1 PAC-12)</b>
	<b>Cal</b>	<b>48.775</b>	<b>48.550</b>	<b>47.900</b>	<b>48.0</b>	<b>193.225</b>	
	Denver	48.925	48.525	48.800	48.950	195.200	L
1/17	<b>DUAL MEET AT CAL</b>						<b>3-3 (0-2 PAC-12)</b>
	<b>Cal</b>	<b>49.025</b>	<b>48.975</b>	<b>49.150</b>	<b>49.125</b>	<b>196.275</b>	
	Utah	49.500	49.325	48.575	49.475	196.875	L
1/24	<b>DUAL MEET AT ARIZONA STATE</b>						<b>3-4 (0-3 PAC-12)</b>
	<b>Cal</b>	<b>49.050</b>	<b>49.075</b>	<b>48.225</b>	<b>49.000</b>	<b>195.350</b>	
	ASU	48.900	49.050	48.925	49.125	196.000	L
1/31	<b>DUAL MEET AT CAL</b>						<b>3-5 (0-4 PAC-12)</b>
	<b>Cal</b>	<b>48.825</b>	<b>49.100</b>	<b>49.050</b>	<b>48.575</b>	<b>195.550</b>	
	UCLA	49.150	49.300	49.050	49.075	196.575	L
2/14	<b>TRI MEET AT SACRAMENTO STATE</b>						<b>5-5 (0-4 PAC-12)</b>
	<b>Cal</b>	<b>49.300</b>	<b>49.275</b>	<b>48.850</b>	<b>49.300</b>	<b>196.725</b>	<b>(1st)</b>
	Sacramento State	48.725	48.450	48.650	49.075	194.900	W (3rd)
	San Jose State	48.950	49.100	48.650	49.025	195.725	W (2nd)
2/22	<b>TRI MEET AT CAL</b>						<b>7-5 (1-4 PAC-12)</b>
	<b>Cal</b>	<b>49.075</b>	<b>49.000</b>	<b>49.175</b>	<b>49.175</b>	<b>196.425</b>	<b>(1st)</b>
	Washington	48.100	48.825	49.000	49.075	195.000	W (2nd)
	Sacramento State	48.775	48.225	47.525	48.900	193.425	W (3rd)
3/3	<b>DUAL MEET AT STANFORD</b>						<b>7-6 (1-5 PAC-12)</b>
	<b>Cal</b>	<b>49.100</b>	<b>49.125</b>	<b>48.900</b>	<b>48.900</b>	<b>196.025</b>	
	Stanford	49.425	49.225	48.800	49.300	196.750	L
3/7	<b>TRI MEET AT KENTUCKY</b>						<b>8-7 (1-5 PAC-12)</b>
	<b>Cal</b>	<b>49.325</b>	<b>49.050</b>	<b>48.550</b>	<b>49.150</b>	<b>196.075</b>	<b>(2nd)</b>
	Kentucky	49.275	48.900	48.550	49.425	196.150	L (1st)
	Centenary College	47.875	45.625	47.675	48.450	189.625	W (3rd)
3/15	<b>DUAL MEET AT CAL</b>						<b>9-7 (1-5 PAC-12)</b>
	<b>Cal</b>	<b>49.175</b>	<b>48.575</b>	<b>48.650</b>	<b>49.275</b>	<b>195.675</b>	
	UC Davis	48.750	49.025	48.325	48.325	194.950	W
3/22	<b>PAC-12 CHAMPIONSHIPS AT CAL</b>						<b>14-9 (6-7 PAC-12)</b>
	<b>Cal</b>	<b>49.150</b>	<b>49.075</b>	<b>49.275</b>	<b>49.050</b>	<b>196.550</b>	
	UCLA	49.200	49.000	49.300	49.025	196.525	W (4th)
	Utah	49.400	49.600	49.275	49.650	197.925	L (1st)
	Stanford	49.400	49.450	49.350	48.975	197.175	L (2nd)
	Oregon State	48.875	49.200	49.150	49.050	196.275	W (5th)
	Washington	48.750	48.950	49.150	48.275	195.125	W (8th)
	Arizona	49.425	48.700	49.025	49.100	196.250	W (6th)
	Arizona State	49.150	48.475	48.625	49.250	195.500	W (7th)
4/5	<b>NCAA REGIONAL AT MINNESOTA</b>						<b>16-12 (6-7 PAC-12)</b>
	<b>Cal</b>	<b>49.125</b>	<b>49.200</b>	<b>48.550</b>	<b>48.825</b>	<b>195.700</b>	
	Oklahoma	49.700	49.175	49.400	49.450	197.725	L (1st)
	Illinois	49.025	49.400	49.150	49.025	196.600	L (2nd)
	Minnesota	49.225	48.700	49.125	49.300	196.350	L (3rd)
	Southern Utah	49.175	48.650	48.875	48.450	195.150	W (5th)
	San Jose State	48.475	48.400	48.200	48.875	193.950	W (6th)

## TOP 3 INDIVIDUAL EVENT FINISH TOTALS BY GYMNAST

Name	1st	2nd	3rd	Total
Alicia Asturias	12	7	8	27
Serena Leong	9	3	3	15
Jessie Howe	5	4	3	12
Charlie Owens	2	7	2	11
Dallas Crawford	2	3	3	8
Leilani Alferos	2	1	--	3
Crystal Paz	1	1	1	3
Desiree Palomares	1	--	1	2
Maddie Kratzke	--	--	1	1
Kristina Heymann	--	--	1	1
<b>TOTAL</b>	<b>34</b>	<b>26</b>	<b>23</b>	<b>81</b>

## TOP 3 TEAM EVENT SCORES OF 2014

### Team Total:

196.725	at Sac State, San Jose State 2/14
196.550	Pac-12 Championships 3/22
196.425	Sac State, Washington 2/22

### Vault:

49.325	at Kentucky, Centenary 3/7
49.300	at Sac State, San Jose Stae 2/14
49.175	UC Davis 3/15

### Uneven Bars:

49.275	at Sac State, San Jose State 2/14
49.200	at NCAA Regional 4/5
49.125	at Stanford 3/3

### Balance Beam:

49.275	Pac-12 Championships 3/22
49.175	Sac State, Washington 2/22
49.175	at Stanford 3/3

### Floor Exercise:

49.300	at Sac State, San Jose State 2/14
49.275	UC Davis 3/15
49.175	Sac State, Washington 2/22
	at Stanford 3/3

## TOP 3 INDIVIDUAL EVENT SCORES OF 2014

### All-Around:

39.425	Alicia Asturias	Pac-12 Championships 3/22
39.400	Alicia Asturias	Utah 1/17
39.350	Alicia Asturias	UCLA 1/31
	Jessica Howe	UC Davis 3/15

### Vault:

9.95	Alicia Asturias	Utah 1/17
9.925	Serena Leong	at Sac State, SJSU 2/14
	Alicia Asturias	at Kentucky, Centenary 3/7

### Uneven Bars:

9.925	Alicia Asturias	at Sac State, SJSU 2/14
	Leilani Alferos	UC Davis 3/15
	Dallas Crawford	at NCAA Regional 4/5

### Balance Beam:

9.90	Jessie Howe	UCLA 1/31
	Serena Leong	Sac State, UW 2/22
	Serena Leong	Pac-12 Championships 3/22
	Jessica Howe	Pac-12 Championships 3/22
9.875	Jessie Howe	Utah 1/17
	Jessie Howe	Sac State, UW 2/22
	Crystal Paz	Sac State, UW 2/22

### Floor Exercise:

9.925	Serena Leong	at Sac State, SJSU 2/14
9.90	Serena Leong	Utah 1/17
	Serena Leong	UCLA 1/31
	Serena Leong	Sac State, UW 2/22
	Alicia Asturias	at Kentucky 3/7
	Serena Leong	UC Davis 3/17
	Alicia Asturias	Pac-12 Championships 3/22

## 2014 INDIVIDUAL MEET SCORES

### LEILANI ALFEROS

Date	Meet	Vault	Bars	Beam	Floor	AA
1/5	at NorCal Meet	--	9.75	--	<u>9.45#</u>	--
1/11	at Denver	--	8.425	--	9.05	--
1/17	UTAH	--	--	--	--	--
1/24	at Arizona State	--	--	--	--	--
1/31	UCLA	--	9.875	--	--	--
2/14	at Sac State & SJSU	--	9.85	--	--	--
2/22	WASHINGTON & SAC STATE	--	9.80	--	--	--
3/3	at Stanford	--	9.825	--	--	--
3/7	at Kentucky	--	9.875	<u>9.725#</u>	--	--
3/15	UC DAVIS	--	<u>9.925#</u>	--	--	--
3/22	Pac-12 Championships	--	9.85	--	--	--
4/5	at NCAA Regionals	--	9.85	--	--	--

### KRISTI HEYMANN

Date	Meet	Vault	Bars	Beam	Floor	AA
1/5	at NorCal Meet	--	--	--	--	--
1/11	at Denver	--	--	--	--	--
1/17	UTAH	--	--	--	--	--
1/24	at Arizona State	--	--	--	--	--
1/31	UCLA	--	--	--	--	--
2/14	at Sac State & SJSU	--	--	--	--	--
2/22	WASHINGTON & SAC STATE	9.725	--	--	--	--
3/3	at Stanford	9.725	--	--	--	--
3/7	at Kentucky	<u>9.875#</u>	--	--	--	--
3/15	UC DAVIS	9.80	--	--	--	--
3/22	Pac-12 Championships	9.75	--	--	--	--
4/5	at NCAA Regionals	9.75	--	--	--	--

### ALICIA ASTURIAS

Date	Meet	Vault	Bars	Beam	Floor	AA
1/5	at NorCal Meet	9.725	9.75	<u>9.85#</u>	9.85	39.175
1/11	at Denver	9.80	9.875	9.70	9.75	39.125
1/17	UTAH	<u>9.95#*</u>	9.875	9.775	9.80	39.400
1/24	at Arizona State	9.80	9.875	9.20	<u>9.825</u>	38.700
1/31	UCLA	9.80	9.90	9.80	9.85	39.350
2/14	at Sac State & SJSU	9.775	<u>9.925#</u>	9.725	9.85	39.275
2/22	WASHINGTON & SAC STATE	9.85	9.825	9.750	9.85	39.275
3/3	at Stanford	9.85	9.80	9.775	9.85	39.275
3/7	at Kentucky	9.925	9.775	9.525	<u>9.90#</u>	39.125
3/15	UC DAVIS	9.825	9.825	9.25	9.85	38.75
3/22	Pac-12 Championships	9.875	9.85	9.80	<u>9.90#</u>	<u>39.425#</u>
4/5	at NCAA Regionals	9.90	9.85	9.775	9.675	39.200

### DANA HO

Date	Meet	Vault	Bars	Beam	Floor	AA
1/5	at NorCal Meet	--	--	--	--	--
1/11	at Denver	--	--	--	--	--
1/17	UTAH	--	--	--	--	--
1/24	at Arizona State	--	--	--	--	--
1/31	UCLA	--	--	--	--	--
2/14	at Sac State & SJSU	--	--	--	--	--
2/22	WASHINGTON & SAC STATE	--	--	--	--	--
3/3	at Stanford	--	--	9.50	--	--
3/7	at Kentucky	--	--	<u>9.65#</u>	--	--
3/15	UC DAVIS	--	--	--	--	--
3/22	Pac-12 Championships	--	--	--	--	--
4/5	at NCAA Regionals	--	--	--	--	--

### ISABELLE CASTILLO

Date	Meet	Vault	Bars	Beam	Floor	AA
1/5	at NorCal Meet	--	--	--	--	--
1/11	at Denver	--	--	--	--	--
1/17	UTAH	--	--	--	--	--
1/24	at Arizona State	--	--	--	--	--
1/31	UCLA	--	--	--	--	--
2/14	at Sac State & SJSU	--	--	--	--	--
2/22	WASHINGTON & SAC STATE	--	--	--	--	--
3/3	at Stanford	--	--	--	--	--
3/7	at Kentucky	--	--	--	--	--
3/15	UC DAVIS	--	--	--	--	--
3/22	Pac-12 Championships	--	--	--	--	--
4/5	at NCAA Regionals	--	--	--	--	--

### JESSICA HOWE

Date	Meet	Vault	Bars	Beam	Floor	AA
1/5	at NorCal Meet	--	--	9.70	9.75	--
1/11	at Denver	--	9.525	9.05	9.65	--
1/17	UTAH	--	9.75	9.875	9.80	--
1/24	at Arizona State	--	9.80	9.85	9.75	--
1/31	UCLA	9.825	9.775	<u>9.90#</u>	9.425	38.925
2/14	at Sac State & SJSU	<u>9.875#</u>	<u>9.85#</u>	9.75	<u>9.85#</u>	39.325
2/22	WASHINGTON & SAC STATE	9.80	9.675	9.875	9.825	39.175
3/3	at Stanford	9.025	9.825	9.675	9.625	38.150
3/7	at Kentucky	--	9.725	9.725	9.25	--
3/15	UC DAVIS	9.825	9.825	9.85	<u>9.85#</u>	<u>39.350#</u>
3/22	Pac-12 Championships	9.80	9.75	<u>9.90#</u>	<u>9.85#</u>	39.300
4/5	at NCAA Regionals	9.75	9.825	9.675	9.80	39.050

### DALLAS CRAWFORD

Date	Meet	Vault	Bars	Beam	Floor	AA
1/5	at NorCal Meet	9.75	9.825	--	--	--
1/11	at Denver	9.725	9.725	--	--	--
1/17	UTAH	9.825	9.85	--	--	--
1/24	at Arizona State	9.775	9.85	--	--	--
1/31	UCLA	9.70	9.825	--	--	--
2/14	at Sac State & SJSU	<u>9.875#</u>	9.175	--	--	--
2/22	WASHINGTON & SAC STATE	9.775	9.875	--	--	--
3/3	at Stanford	<u>9.875#</u>	9.85	--	--	--
3/7	at Kentucky	<u>9.875#</u>	9.825	--	--	--
3/15	UC DAVIS	9.85	9.825	--	--	--
3/22	Pac-12 Championships	9.80	9.85	--	--	--
4/5	at NCAA Regionals	9.825	<u>9.925#</u>	--	--	--

### MADDIE KRATZKE

Date	Meet	Vault	Bars	Beam	Floor	AA
1/5	at NorCal Meet	9.725	9.675	9.70	--	--
1/11	at Denver	9.60	9.675	9.025	--	--
1/17	UTAH	9.675	<u>9.725#</u>	<u>9.80#</u>	--	--
1/24	at Arizona State	<u>9.80#</u>	9.15	9.725	--	--
1/31	UCLA	--	--	--	--	--
2/14	at Sac State & SJSU	--	--	--	--	--
2/22	WASHINGTON & SAC STATE	--	--	--	--	--
3/3	at Stanford	--	--	--	--	--
3/7	at Kentucky	--	--	--	--	--
3/15	UC DAVIS	--	--	--	--	--
3/22	Pac-12 Championships	--	--	--	--	--
4/5	at NCAA Regionals	--	--	--	--	--

### ZOE DRAGHI

Date	Meet	Vault	Bars	Beam	Floor	AA
1/5	at NorCal Meet	--	--	--	--	--
1/11	at Denver	--	--	--	--	--
1/17	UTAH	--	--	--	--	--
1/24	at Arizona State	--	--	--	--	--
1/31	UCLA	--	--	--	--	--
2/14	at Sac State & SJSU	--	--	--	--	--
2/22	WASHINGTON & SAC STATE	--	--	--	--	--
3/3	at Stanford	--	--	--	<u>9.775</u>	--
3/7	at Kentucky	--	--	--	--	--
3/15	UC DAVIS	--	--	--	9.75	--
3/22	Pac-12 Championships	--	--	--	9.60	--
4/5	at NCAA Regionals	--	--	--	9.25	--

### SERENA LEONG

Date	Meet	Vault	Bars	Beam	Floor	AA
1/5	at NorCal Meet	9.825	--	--	9.65	--
1/11	at Denver	9.775	--	9.75	9.75	--
1/17	UTAH	9.85	--	9.85	9.90	--
1/24	at Arizona State	9.90	--	9.175	9.80	--
1/31	UCLA	9.85	--	9.75	9.90	--
2/14	at Sac State & SJSU	<u>9.925#</u>	--	9.675	<u>9.925#</u>	--
2/22	WASHINGTON & SAC STATE	9.85	--	<u>9.90#</u>	9.90	--
3/3	at Stanford	9.80	--	9.75	9.85	--
3/7	at Kentucky	9.875	--	9.625	9.875	--
3/15	UC DAVIS	9.875	--	9.625	9.90	--
3/22	Pac-12 Championships	9.90	--	<u>9.90#</u>	9.20	--
4/5	at NCAA Regionals	9.85	--	9.125	9.75	--

Underline denotes season-best score | # denotes collegiate-best score | \* denotes program record

# 2014 INDIVIDUAL MEET SCORES

## CHARLIE OWENS

Date	Meet	Vault	Bars	Beam	Floor	AA
1/5	at NorCal Meet	9.75	9.675	9.775	9.75	38.950
1/11	at Denver	9.775	9.75	9.75	9.70	38.975
1/17	UTAH	8.85	9.775	9.85	9.10	37.575
1/24	at Arizona State	9.775	9.825	9.725	9.85	39.175
1/31	UCLA	9.625	9.725	9.80	9.675	38.825
2/14	at Sac State & SJSU	<u>9.85#</u>	<u>9.85#</u>	9.725	9.825	<u>39.250#</u>
2/22	WASHINGTON & SAC STATE	9.80	9.80	9.75	9.80	39.150
3/3	at Stanford	9.80	9.825	<u>9.875#</u>	9.425	38.925
3/7	at Kentucky	9.775	<u>9.85#</u>	9.70	<u>9.875#</u>	39.200
3/15	UC DAVIS	9.775	8.55	9.75	9.825	37.90
3/22	Pac-12 Championships	9.775	9.45	9.80	9.85	38.875
4/5	at NCAA Regionals	9.80	9.75	9.75	9.80	39.100

## DESIREE PALOMARES

Date	Meet	Vault	Bars	Beam	Floor	AA
1/5	at NorCal Meet	--	--	9.725	--	--
1/11	at Denver	--	--	9.65	--	--
1/17	UTAH	--	--	9.775	<u>9.80#</u>	--
1/24	at Arizona State	--	--	9.725	9.775	--
1/31	UCLA	--	--	9.80	9.725	--
2/14	at Sac State & SJSU	--	--	9.825	9.75	--
2/22	WASHINGTON & SAC STATE	--	--	9.775	<u>9.80#</u>	--
3/3	at Stanford	--	--	9.775	9.675	--
3/7	at Kentucky	--	--	9.725	--	--
3/15	UC DAVIS	--	--	--	--	--
3/22	Pac-12 Championships	--	--	<u>9.85#</u>	--	--
4/5	at NCAA Regionals	--	--	9.725	--	--

## EMILY RICHARDSON

Date	Meet	Vault	Bars	Beam	Floor	AA
1/5	at NorCal Meet	--	9.50	--	--	--
1/11	at Denver	--	--	--	--	--
1/17	UTAH	--	9.60	--	--	--
1/24	at Arizona State	--	9.725	--	--	--
1/31	UCLA	--	9.675	--	--	--
2/14	at Sac State & SJSU	--	<u>9.80#</u>	--	--	--
2/22	WASHINGTON & SAC STATE	--	9.70	--	--	--
3/3	at Stanford	--	<u>9.80#</u>	--	--	--
3/7	at Kentucky	--	9.725	--	--	--
3/15	UC DAVIS	--	9.175	--	--	--
3/22	Pac-12 Championships	--	9.775	--	--	--
4/5	at NCAA Regionals	--	9.525	--	--	--

## AMBER TAKARA

Date	Meet	Vault	Bars	Beam	Floor	AA
1/5	at NorCal Meet	--	--	--	--	--
1/11	at Denver	--	--	--	--	--
1/17	UTAH	--	--	--	--	--
1/24	at Arizona State	--	--	--	--	--
1/31	UCLA	--	--	--	--	--
2/14	at Sac State & SJSU	--	--	--	--	--
2/22	WASHINGTON & SAC STATE	--	--	--	--	--
3/3	at Stanford	--	--	--	--	--
3/7	at Kentucky	--	--	--	--	--
3/15	UC DAVIS	--	--	--	--	--
3/22	Pac-12 Championships	--	--	--	--	--
4/5	at NCAA Regionals	--	--	--	--	--

**Underline denotes season-best score**

**# denotes collegiate-best score**

**\* denotes program record**

## JORDAN WIDENER

Date	Meet	Vault	Bars	Beam	Floor	AA
1/5	at NorCal Meet	--	--	--	--	--
1/11	at Denver	--	--	--	--	--
1/17	UTAH	--	--	--	--	--
1/24	at Arizona State	--	--	--	--	--
1/31	UCLA	--	--	--	--	--
2/14	at Sac State & SJSU	--	--	--	--	--
2/22	WASHINGTON & SAC STATE	--	--	--	--	--
3/3	at Stanford	--	--	--	--	--
3/7	at Kentucky	--	--	--	--	--
3/15	UC DAVIS	--	--	--	--	--
3/22	Pac-12 Championships	--	--	--	--	--
4/5	at NCAA Regionals	--	--	--	--	--

# CALIFORNIA EVENT TITLES

Date	Meet	Place	Event	Gymnast	Score
1/5	at NorCal Meet	T1st	V	Serena Leong	9.825
		T1st	BB	Alicia Asturias	9.85
		T1st	FX	Alicia Asturias	9.85
		1st	AA	Alicia Asturias	39.175
1/11	at Denver	1st	UB	Alicia Asturias	9.875
		1st	AA	Alicia Asturias	39.125
1/17	UTAH	1st	BB	Jessie Howe	9.875
		1/24	at Arizona State	1st	V
1st	UB			Alicia Asturias	9.875
1st	AA			Charlie Owens	39.175
T1st	BB			Jessica Howe	9.85
1/31	UCLA	1st	BB	Jessica Howe	9.90
		T1st	UB	Alicia Asturias	9.90
2/14	at Sac State & SJSU	1st	V	Serena Leong	9.925
		1st	UB	Alicia Asturias	9.925
		1st	FX	Serena Leong	9.925
		1st	AA	Jessica Howe	39.325
2/22	WASHINGTON & SAC STATE	T1st	BB	Desiree Palomares	9.825
		T1st	BB	Crystal Paz	9.825
		1st	UB	Dallas Crawford	9.875
3/3	at Stanford	1st	BB	Serena Leong	9.90
		1st	AA	Alicia Asturias	39.275
3/7	at Kentucky	T1st	V	Serena Leong	9.85
		T1st	V	Alicia Asturias	9.85
		T1st	BB	Charlie Owens	9.875
		1st	UB	Leilani Alferos	9.875
3/14	UC DAVIS	T1st	V	Alicia Asturias	9.925
		T1st	FX	Alicia Asturias	9.900
		1st	V	Serena Leong	9.875
3/22	PAC-12 CHAMPIONSHIPS	1st	UB	Leilani Alferos	9.925
		1st	BB	Jessica Howe	9.850
		1st	AA	Jessica Howe	39.350
4/5	at NCAA Regionals	T1st	FX	Serena Leong	9.900
		1st	UB	Dallas Crawford	9.925
		3rd	AA	Alicia Asturias	39.200

# CALIFORNIA ALL-TIME TOP INDIVIDUAL SCORES

## VAULT

Score	Gymnast	Site	Date/Most Recent	
<b>9.950</b>	Alicia Asturias (2x)	Berkeley	1/17/14	
	Lauren Shipp	Berkeley	1/30/04	
	My-Lan Dodd (3x)	at San Jose State	3/21/03	
	Monique Chang	Berkeley	2/21/03	
	Lisa Washington	at Arizona State	3/25/95	
	Kristen Smyth	at Arizona	3/28/92	
<b>9.925</b>	Alicia Asturias	at Kentucky	3/7/14	
	<b>SERENA LEONG</b>	<b>AT SACRAMENTO STATE</b>	<b>2/14/14</b>	
	Isabel Garcia	Berkeley	3/9/07	
	Monique Chang	at Stanford	2/20/04	
	Stephanie Kim	at Arizona	2/6/04	
	Lisa Arnold	Berkeley	2/18/01	
	Candice Kwok	Berkeley	3/29/96	
	Lisa Washington (2x)	Berkeley	2/3/96	
	<b>9.900</b>	<b>SERENA LEONG (4X)</b>	<b>PAC-12 CHAMPIONSHIPS</b>	<b>3/22/14</b>
		Alicia Asturias (3x)	at NCAA Regional	4/5/14
My-Lan Dodd		Berkeley	3/7/05	
Lauren Shipp (2x)		Berkeley	3/12/04	
Karissa Chock (2x)		Berkeley	1/23/04	
Janet McKnight (2x)		Berkeley	3/7/03	
Leila Khoury (2x)		at Boise State	3/11/00	
Candice Kwok (3x)		at Arizona State	2/21/97	
Heather Schneider		at Oregon State	3/16/96	
Lisa Washington (3x)		at Stanford	3/12/93	

## UNEVEN BARS

Score	Gymnast	Opponent	Date/Most Recent
<b>10.000</b>	Cindy Tom	at Seattle Pacific	2/15/92
<b>9.950</b>	Madisyn O'Brien	Stanford	1/26/13
	My-Lan Dodd	Berkeley	3/12/04
	Stephanie Kim	Berkeley	3/12/04
	Pari Olver	at UC Davis	2/24/00
<b>9.925</b>	Dallas Crawford (2x)	at NCAA Regional	4/5/14
	Leilani Alferos	UC Davis	3/15/14
	Alicia Asturias	at Sacramento St.	2/14/14
	Miho Maeda	Berkeley	3/12/04
	Monique Chang	at Stanford	2/20/04
	My-Lan Dodd (2x)	Berkeley	2/13/04
<b>9.900</b>	Alicia Asturias	Berkeley vs. UCLA	1/31/14
	Madisyn O' Brien	Berkeley	1/6/13
	Joanna Bennett	Berkeley	1/20/08
	Bridgette Glass	at UC Davis	3/23/07
	Lydia Williams	Berkeley	3/9/07
	Britani Pittullo	at George Washington	3/12/06
	Miho Maeda	Berkeley	1/14/05
	Monique Chang (4x)	Pac-10 Championships	3/20/04
	Stephanie Kim (2x)	at Boise State	2/27/04
	Miho Maeda	at Stanford	2/20/04
	My-Lan Dodd (3x)	at Arizona	2/6/04
	Carrie Kreifels (4x)	at Pac-10 Champ	3/24/01
	Pari Olver (2x)	at Pac-10 Champ	3/24/01
	Leila Khoury	at San Jose State	2/26/00
	Cindy Tom	at Arizona	2/11/94
	Kristen Smyth	Berkeley	3/21/92

## BALANCE BEAM

Score	Gymnast	Opponent	Date/Most Recent
<b>9.950</b>	My-Lan Dodd (2x)	Pac-10 Championships	3/20/04
	Miho Maeda	at Arizona State	2/28/03
<b>9.925</b>	My-Lan Dodd	at Stanford	2/20/04
	Stephanie Kim	Berkeley	3/12/04
	Pari Olver	at San Jose State	3/16/01
<b>9.900</b>	<b>JESSICA HOWE (2X)</b>	<b>PAC-12 CHAMPIONSHIPS</b>	<b>3/22/14</b>
	<b>SERENA LEONG (2X)</b>	<b>PAC-12 CHAMPIONSHIPS</b>	<b>3/22/14</b>
	Bridgette Glass (4x)	Berkeley	3/16/08
	Jessica Kelley	at UC Davis	3/23/07

Stephanie Kim (2x)	Berkeley	2/13/04
Karissa Chock	Berkeley	2/13/04
My-Lan Dodd (4x)	Berkeley	1/23/04
Katreece Stone (2x)	at Arizona State	2/23/01
Genine Ishino	at Denver	1/13/01
Candice Kwok (3x)	at Arizona	3/22/97
Jennie Kang	Berkeley	2/7/97
Emily Bails	Berkeley	3/8/96
Cindy Tom (3x)	at Seattle Pacific	2/15/92

## FLOOR EXERCISE

Score	Gymnast	Opponent	Date/Most Recent	
<b>9.950</b>	Stephanie Kim	at Stanford	2/20/04	
	Monique Chang	Arizona	2/6/04	
	My-Lan Dodd	Berkeley	1/23/04	
	Leila Khoury	at San Jose State	2/26/00	
<b>9.925</b>	<b>SERENA LEONG</b>	<b>AT SACRAMENTO STATE</b>	<b>2/14/14</b>	
	Mariesah Pierce	Berkeley	1/26/13	
	My-Lan Dodd (2x)	Berkeley	3/12/04	
	Stephanie Kim (2x)	Berkeley	2/13/04	
	Monique Chang	Berkeley	3/7/03	
	Pari Olver (4x)	at UCLA	3/4/01	
	Katreece Stone	at UC Davis	3/10/01	
	Mindy Ornellas (2x)	Berkeley	2/7/97	
	<b>9.900</b>	Alicia Asturias (3x)	Pac-12 Championships	3/22/14
		<b>SERENA LEONG (6X)</b>	<b>UC DAVIS</b>	<b>3/17/14</b>
Mariesah Pierce		Berkeley	2/6/11	
Sophia Hocini		Berkeley	3/16/08	
Stephanie Kim (6x)		at Pac-10 Champ	3/20/04	
My-Lan Dodd (6x)		at Arizona	2/6/04	
Britani Pittullo (3x)		at Pac-10 Champ	2/29/03	
Monique Chang		Berkeley	2/9/03	
Lindsay Baker (2x)		at Pac-10 Champ	3/24/01	
Pari Olver		at Pac-10 Champ	3/24/01	
Katreece Stone		at Pac-10 Champ	3/24/01	
Carrie Kreifels		at UC Davis	3/10/01	
Leila Khoury (3x)	at NCAA Regional	4/1/00		
Bridgett Coates	at Pac-10 Champ	3/18/00		

## ALL-AROUND

Score	Gymnast	Opponent	Date/Most Recent
<b>39.675</b>	My-Lan Dodd	at Arizona State	2/28/03
<b>39.650</b>	Stephanie Kim	Berkeley	3/12/04
<b>39.575</b>	My-Lan Dodd (2x)	Berkeley	3/12/04
<b>39.500</b>	My-Lan Dodd (2x)	at Pac-10 Champ	3/29/03
<b>39.475</b>	My-Lan Dodd	at UC Davis	3/14/03

# CALIFORNIA ALL-TIME TOP TEAM SCORES

**TEAM EVENT RECORDS**

	<b>Score</b>	<b>Opponent</b>	<b>Date</b>
Vault	49.375	Washington & Sac State	2/21/03
Uneven Bars	49.550	Ball State	3/21/03
Balance Beam	49.300	Utah State	3/6/04
Floor Exercise	49.425	Stanford	2/20/04
Team Total	196.800	2x, last vs. Ball State	3/12/04

**VAULT**

<b>Score</b>	<b>Site/Opponent(s)</b>	<b>Date</b>
49.375	Berkeley/Washington, Sacramento State	2/21/03
49.325	Lexington, Ky./Kentucky, Centenary College	3/7/14
	Berkeley/Ball State	3/12/04
49.300	Sacramento/Sacramento State, San Jose State	2/14/14
49.275	Berkeley/Nebraska	3/16/13
	at Arizona State/Rutgers	2/28/03
49.200	Berkeley/Brown, San Jose State	2/18/13
	NCAA Regional Championships/Corvallis, Ore.	4/3/04
49.175	Berkeley/UC Davis	3/15/14
49.150	at San Jose State	3/21/03

**BARS**

<b>Score</b>	<b>Site/Opponent(s)</b>	<b>Date</b>
49.550	Berkeley/Ball State	3/12/04
49.400	at San Jose State	2/26/00
49.325	at UC Davis	3/23/07
49.275	Sacramento/Sacramento State, San Jose State	2/14/14
	at UC Davis	2/24/00
49.250	Berkeley/Washington, Sacramento State	2/21/03
	Berkeley/Boise State, Fullerton, UC Davis	2/9/03

**BEAM**

<b>Score</b>	<b>Site/Opponent(s)</b>	<b>Date</b>
49.300	at Utah State	3/6/04
49.275	Berkeley/Pac-12 Championships	3/22/14
49.250	Berkeley/Arizona	3/7/03
49.225	at UC Davis	3/23/07
49.175	at Stanford	3/3/14
	Berkeley/Sacramento State, Washington	2/22/14
	Pac-10 Championships Tucson, Ariz.	3/20/04
	Berkeley/Boise State, Fullerton, UC Davis	2/9/03

**FLOOR**

<b>Score</b>	<b>Site/Opponent(s)</b>	<b>Date</b>
49.425	at Stanford	2/20/04
49.375	at Pac-10 Championships; Seattle, Wash.	3/24/01
49.325	Berkeley/Stanford	1/26/13
49.300	Sacramento/Sacramento State, San Jose State	2/14/14
	Berkeley/Washington, UC Davis	2/9/01
	at San Jose State	2/26/00
49.275	Berkeley/UC Davis	3/15/14
	at Arizona State/Rutgers	2/28/03
	Berkeley/Boise State, Fullerton, UC Davis	2/9/03

**TEAM TOTAL**

<b>Score</b>	<b>Site/Opponent(s)</b>	<b>Date</b>
196.800	Berkeley/Ball State	3/12/04
	Berkeley/Arizona	3/7/03
196.725	Sacramento/Sacramento State, San Jose State	2/14/14
196.550	Berkeley/Pac-12 Championships	3/22/14
196.525	Berkeley/Nebraska	3/16/13
196.500	at UC Davis	3/23/07
196.475	Berkeley/Washington, Sacramento State	2/21/03
196.425	Berkeley/Sacramento State, Washington	2/22/14
196.375	Berkeley/Boise State, Fullerton, UC Davis	2/9/03



# HONORS & AWARDS

## NCAA ALL-AMERICA

4 Gymnasts, 6 Honors

2014	Alicia Asturias (All-Around - second team)
1992	Kristen Smyth (Vault - first team, Floor Exercise & All-Around - second team) Mimi Goyer (Balance Beam - second team) Cindy Tom (Balance Beam - second team)

## NCAA REGIONAL INDIVIDUAL EVENT CHAMPIONS

3 Gymnasts, 4 Titles

2014	Dallas Crawford (Uneven Bars, 9.925)
1992	Cindy Tom (Uneven Bars, 9.925)
1991	Kristen Smyth (Vault, 9.75)
1990	Cindy Tom (Uneven Bars, 9.90)

## PAC-12 INDIVIDUAL EVENT CHAMPIONS

4 Gymnasts, 4 Titles

2004	My-Lan Dodd (Balance Beam, 9.95)
1997	Mindy Ornellas (Floor Exercise, 9.90)
1995	Lisa Washington (Vault, 9.95)
1992	Cindy Tom (Uneven Bars, 9.90)

## ALL-PAC-12

11 Gymnasts, 12 Honors

2014	Alicia Asturias (All-Around first team) <b>Charlie Owens (All-Around second team)</b>
2013	Alicia Asturias (All-Around second team) Mariesah Pierce (All-Around second team)
2011	Madisyn O'Brien (All-Around second team)
2010	Avery Gee (All-Around second team)
2009	Sophia Hocini (All-Around second team)
1998	Leila Khoury (All-Around)
1997	Mindy Ornellas (Floor Exercise)
1995	Lisa Washington (Vault)
1992	Kristen Smyth Cindy Tom

## COSIDA ACADEMIC ALL-AMERICA HALL OF FAME

1 Gymnast, 1 Honor

2014	Sigall Kassutto
------	-----------------

## COSIDA ACADEMIC ALL-AMERICA

2 Gymnasts, 2 Honors

2014	Alicia Asturias
1992	Sigall Kassutto

## COSIDA ACADEMIC ALL-DISTRICT

1 Gymnast, 1 Honor

2014	Alicia Asturias
------	-----------------

## NACGC SCHOLASTIC ALL-AMERICA

44 Gymnasts, 68 Honors

2014	Leilani Alferos Alicia Asturias <b>Serena Leong</b>
2013	Alicia Asturias Dallas Crawford <b>Serena Leong</b> Carol Chang

	Arla Rosenzweig
2012	Alicia Asturias Alexandra Leggit Lina Nillson Arla Rosenzweig
2010	Stefanie Cheng Avery Gee
2009	Stefanie Cheng
2008	Alli Szutu Nicki Wells Stefanie Cheng Reiko Senteno
2007	Elyse Wong Justine Cephus Nicki Wells Vanna Rocchi Sophia Hocini
2005	My-Lan Dodd Miho Maeda Lauren Shipp Elyse Wong Nicki Wells
2004	Karissa Chock My-Lan Dodd Elyse Wong
2003	Janet McKnight My-Lan Dodd
2002	My-Lan Dodd
2001	Lindsay Baker Pari Olver Katrece Stone Jarmin Yeh
1997	Paula Chang
1996	Mindy Ornellas Candice Kwok Sirinda Sincharoen Christine Nishimoto Jennifer Wang
1995	Mindy Ornellas Candice Kwok Sirinda Sincharoen Jennifer Wang Sharly Wong Carrie Schneider Cassie Shigeoka
1994	Sirinda Sincharoen Cassie Shigeoka Erin Power
1992	Mimi Goyer Sigall Kassutto Kristen Smyth Ingrid Wertz
1991	Mimi Goyer Jenny Griesemer Sigall Kassutto Pam Jong Kati McBride Nicole McLeod
1990	Mimi Goyer Sigall Kassutto
1989	Sigall Kassutto

# HONORS & AWARDS

## PAC-12 ALL-ACADEMIC

55 Gymnasts, 92 Honors

2014	Alicia Asturias (first team) <b>Serena Leong (first team)</b> Leilani Alferos (honorable mention) Dallas Crawford (honorable mention)
2013	Alicia Asturias (first team) Arla Rosenzweig (second team) Stina Olivere (honorable mention) Chelsea Spomer (honorable mention) Carol Chang (honorable mention) Leilani Alferos (honorable mention) Dallas Crawford (honorable mention)
2012	Alicia Asturias (first team) Alexandra Leggitt (second team) Arla Rosenzweig (second team) Lina Nilsson (second team) Chelsea Spomer (honorable mention) Stina Olivere (honorable mention) Carol Chang (honorable mention) Dallas Crawford (honorable mention)
2011	Avery Gee (second team) Alexandra Leggitt (honorable mention)
2010	Avery Gee (honorable mention) Sophia Hocini (honorable mention) Shana Johnson (honorable mention) Alexandra Leggitt (honorable mention)
2009	Stefanie Cheng (first team) Sophia Hocini (first team) Joanna Bennett (honorable mention)
2008	Nicki Wells (first team) Sophia Hocini (second team) Siobhan Luce (honorable mention)
2007	Nicki Wells (second team) Elyse Wong (second team) Joanna Bennett (honorable mention) Justine Cephus (honorable mention) Isabel Garcia (honorable mention) Siobhan Luce (honorable mention) Alli Szutu (honorable mention) Tiffany Tam (honorable mention)
2006	Britani Pittullo (honorable mention) Justine Cephus (honorable mention) Siobhan Luce (honorable mention) Alli Szutu (honorable mention) Nicki Wells (honorable mention)
2005	My-Lan Dodd (first team) Lauren Shipp (honorable mention)
2004	My-Lan Dodd (second team) Karissa Chock (honorable mention) Stephanie Kim (honorable mention)
2003	My-Lan Dodd (second team) Karissa Chock (honorable mention) Janet McKnight (honorable mention) Adrienne Garcia (honorable mention) Lauren Shipp (honorable mention)
2002	Karissa Chock (honorable mention) Stephanie Kim (honorable mention) Janet McKnight (honorable mention)

2001	Katrece Stone (honorable mention) Pari Olver (second team) Lindsay Baker (honorable mention) Genine Ishino (honorable mention) Kristine Kaibara (honorable mention) Janet McKnight (honorable mention) Katrece Stone (honorable mention) Jarmin Yeh (honorable mention)
2000	Pari Olver (second team) Lindsay Baker (honorable mention) Paula Chang (honorable mention)
1998	Emily Bails (honorable mention) Elizabeth Berlin (honorable mention) Chantel Debert (honorable mention) Angela Mapa (honorable mention)
1997	Candice Kwok (second team) Mindy Ornellas (second team) Emily Bails (honorable mention) Angela Mapa (honorable mention)
1996	Christine Nishimoto (honorable mention) Mindy Ornellas (honorable mention) Sirinda Sincharoen (honorable mention) Jennifer Wang (honorable mention)
1995	Mindy Ornellas (honorable mention) Cassie Shigeoka (honorable mention) Jennifer Wang (honorable mention)
1994	Amy Sims (honorable mention) Sirinda Sincharoen (honorable mention)
1993	Mimi Goyer (second team)
1992	Sigall Kassutto (first team) Kristen Smyth (first team) Mimi Goyer (second team) Kati McBride (honorable mention) Nicole McLeod (honorable mention) Ingrid Wertz (honorable mention)

## NACCG/W REGION COACH OF THE YEAR

2014	<b>Justin Howell</b>
2013	<b>Justin Howell</b>

## PAC-12 COACH OF THE YEAR

2013	<b>Justin Howell</b>
2003	Cari DuBois (shared)
1994	Alfred Mitchell (shared)

## PAC-12 FRESHMAN/NEWCOMER OF THE YEAR

Honor started in 2000

2013	<b>Serena Leong</b>
------	---------------------

## TOM HANSEN CONFERENCE MEDAL

Honor started in 1960

2014	Alicia Asturias
------	-----------------

## PAC-12 SCHOLAR-ATHLETE OF THE YEAR

2014	Alicia Asturias
------	-----------------

## CONFERENCE CHAMPIONSHIP

Prior to 1987, Cal competed in the NorPac/NorCal Conference

1984	<b>1st</b>
------	------------

## YEAR-BY-YEAR RESULTS

YEAR	COACH	RECORD	PAC-12 FINISH	REGIONAL FINISH	NATIONAL FINISH	FINAL RANK	HIGH SCORE
2014	Justin Howell	16-12	3rd	4th	DNQ	16	196.725
2013	Justin Howell	10-19	7th	6th	DNQ	28	196.525
2012	Danna Durante	4-18	8th	Individuals	DNQ	49	194.725
2011	Cari DuBois	5-20	6th	Individuals	DNQ	50	193.325
2010	Cari DuBois	1-20	6th	DNQ	DNQ	55	192.450
2009	Cari DuBois	2-20	7th	DNQ	DNQ	57	191.975
2008	Cari DuBois	8-16	5th	Individuals	DNQ	44	194.100
2007	Cari DuBois	8-15	7th	4th	DNQ	26	196.500
2006	Cari DuBois	8-18	7th	Individuals	DNQ	49	194.275
2005	Cari DuBois	6-18	7th	DNQ	DNQ	55	192.350
2004	Cari DuBois	9-12	7th	5th	DNQ	25	196.800
2003	Cari DuBois	11-11	7th	4th	Individuals	22	196.800
2002	Trina Tinti	5-15	7th	Individuals	DNQ	53	193.925
2001	Trina Tinti	15-15	7th	4th	DNQ	29	196.075
2000	Trina Tinti	11-12	5th	DNQ	DNQ	30	195.975
1999	Trina Tinti	6-21	7th	Individuals	DNQ	48	192.475
1998	Trina Tinti	8-15	7th	6th	DNQ	28	190.675
1997	Alfie Mitchell	9-17	7th	6th	DNQ	25	194.325
1996	Alfie Mitchell	16-12	7th	7th	DNQ	16	194.100
1995	Alfie Mitchell	7-18	7th	5th	DNQ	N/A	191.825
1994	Alfie Mitchell	14-8	7th	5th	Individuals	N/A	192.250
1993	Pam Burgess	8-12	6th	Individuals	DNQ	N/A	190.050
1992	Pam Burgess	10-8	6th	3rd	8th	N/A	192.100
1991	Pam Burgess	17-14	7th	2nd	Individuals	N/A	190.550
1990	Pam Burgess	11-11	5th	T5th	Individuals	N/A	187.550
1989	Pam Burgess	5-14	7th	7th	DNQ	N/A	186.300
1988	Pam Burgess	7-15	7th	Individuals	DNQ	N/A	183.150
1987	Pam Burgess	10-18	7th	6th	DNQ	N/A	181.450
1986	Pam Burgess	11-9	3rd (NorPac)	6th	Individuals	N/A	184.850
1985	Diane Dunbar	10-15	4th (NorPac)	Individuals	Individuals	N/A	180.750
1984	Diane Dunbar	15-13	1st (NorPac)	5th	Individuals	N/A	183.900
1983	Diane Dunbar	9-8	3rd (NorPac)	7th	DNQ	N/A	179.550
1982	Diane Dunbar	8-9	2nd (NorCal)	DNQ	DNQ	N/A	138.850
1981	Dale Flansaas	6-15	3rd (NorCal)	N/A	N/A	N/A	132.500
1980	Dale Flansaas	6-11	3rd (NorCal)	N/A	N/A	N/A	130.950
1979	Dan Millman	5-10	N/A	N/A	N/A	N/A	119.150
1978	Dan Millman	3-12	N/A	N/A	N/A	N/A	117.150
1977	Molly Rackham	5-4	N/A	N/A	N/A	N/A	145.720
1976	Debbie Bailey	0-3*	N/A	N/A	N/A	N/A	185.800
1975	Debbie Bailey	1-0*	N/A	N/A	N/A	N/A	65.850
1974	Sue Williamson	4-3*	N/A	N/A	N/A	N/A	199.200

\* indicates records are incomplete

## ALL-TIME COACHING RECORDS

NAME	YEARS	RECORD	WIN PCT.	NAME	YEARS	RECORD	WIN PCT.
<b>Justin Howell</b>	<b>2013-present</b>	<b>26-31</b>	<b>.456</b>	Diane Dunbar	1982-85	42-45	.483
Danna Durante	2012	4-18	.182	Dale Flansaas	1980-81	12-26	.316
Cari DuBois	2003-11	58-150	.279	Dan Millman	1978-79	8-22	.267
Trina Tinti	1998-02	45-78	.366	Molly Rackham	1977	5-4	.556
Alfie Mitchell	1994-97	46-55	.455	Debbie Bailey	1975-76	1-3	.250
Pam Burgess	1986-93	79-101	.439	Sue Williamson	1974	4-3	.571

# YEAR-BY-YEAR SCHEDULE & RESULTS

## 2014

### 16-12 • Head Coach: Justin Howell

DATE	OPPONENT	W/L	OPPONENT	CAL SCORE
1/5	at NorCal Classic			
	Sacramento State	W	194.400	194.650 (2nd)
	Stanford	L	194.825	
	San Jose State	W	193.325	
	UC Davis	W	193.450	
1/11	at Denver	L	195.200	193.225
1/17	UTAH	L	196.875	196.275
1/24	at Arizona State	L	196.000	195.350
1/31	UCLA	L	196.575	195.550
2/14	at Sacramento State	W	194.900	196.725
	San Jose State	W	195.725	
2/22	WASHINGTON	W	195.000	196.425
	SACRAMENTO STATE	W	193.425	
3/3	at Stanford	L	196.750	196.025
3/7	at Kentucky	L	196.150	196.075
	Centenary College	W	189.625	
3/15	UC DAVIS	W	194.950	195.675
3/22	PAC-12 CHAMPIONSHIPS			196.550 (3rd)
4/5	NCAA West Regionals			195.700 (4th)
4/18-4/20	NCAA Championships	Individuals		

## 2013

### 10-19 • Head Coach: Justin Howell

DATE	OPPONENT	W/L	OPPONENT	CAL SCORE
1/6	KENTUCKY	W	195.125	195.425
	ARIZONA	W	194.825	
	AUBURN	W	195.12	
1/11	UC Davis	W	192.425	194.575
1/18	Washington	L	194.8	194.125
	UC Davis	W	193.625	
	Illinois Chicago	W	191.35	
1/26	STANFORD	L	196.450	195.775
2/3	OREGON STATE	L	196.050	194.700
2/9	Utah	L	197.050	192.750
2/18	SAN JOSE STATE	W	195	195.925
	BROWN	W	189.35	
3/1	Stanford	L	197.2	195.000
	Oregon State	L	197.175	
3/10	at UCLA	L	197.075	194.925
	Michigan	L	197.55	
	Iowa State	W	194.65	
3/16	NEBRASKA	L	197.525	196.525
3/23	Pac-12 Championships			195.075 (7th)
4/6	NCAA West Regionals			195.125 (6th)

## 2012

### 4-18 • Head Coach: Danna Durante

DATE	OPPONENT	W/L	OPPONENT	CAL SCORE
1/6	Sacramento State	W	189.725	190.375
1/15	UCLA	L	196.675	192.500
1/20	Arizona State	L	195.250	194.050
1/27	UC Davis	W	191.6	191.750
	Seattle Pacific	W	189.275	
2/5	UC DAVIS	W	190.625	193.275
2/12	STANFORD	L	196.175	194.725
2/17	Oregon State	L	196.775	192.350
	UCLA	L	196.775	
2/24	San Jose State	L	194.9	192.475
	Maryland	L	194.25	
3/4	Stanford	L	196.575	191.450
	Arizona	L	195.025	
3/9	Boise State	L	195.875	193.050
3/18	WASHINGTON	L	196.250	191.775
3/24	Pac-12 Championships			193.525 (8th)
4/7	NCAA West Regionals	Individuals		

## 2011

### 5-20 • Head Coach: Cari DuBois

DATE	OPPONENT	W/L	OPPONENT	CAL SCORE
1/9	at Pac-10 Showcase			
	Stanford	L	196.625	191.675 (7th)
	UCLA	L	195.925	
	Oregon State	L	195.375	
	Arizona	L	193.825	
	Washington	L	193.675	
	Arizona State	L	191.85	
1/14	SAN JOSE STATE	L	192.95	192.475
	UC DAVIS	L	192.6	
1/21	Washington	L	195.475	190.125
1/30	ALASKA-ANCHORAGE	W	188.425	191.850
2/6	SACRAMENTO STATE	L	192.900	192.700
2/11	Arizona State	L	194.450	191.975
2/20	UC Davis	L	194.050	191.500
3/6	OREGON STATE	L	197	194.175
	STANFORD	L	196.5	
	DENVER	L	194.625	
3/13	Penn	W	191.125	193.325
	Temple	W	191.2	
	Southern Connecticut	W	188.45	
3/19	Pac-10 Championships			191.575 (6th)
4/2	NCAA West Regionals	Individuals		

## 2010

### 1-20 • Head Coach: Cari DuBois

DATE	OPPONENT	W/L	OPPONENT	CAL SCORE
1/17	ARIZONA STATE	L	192.825	191.800
1/22	UCLA	L	194.425	190.375
	SAN JOSE STATE	L	191.95	
1/29	Arizona	L	194.700	189.375
2/7	OREGON STATE	L	196.375	190.100
2/19	Washington	L	195.625	189.325
2/28	Stanford	L	196.525	188.825
	UNC	L	192.975	
	Eastern Michigan	L	190.125	
3/5	San Jose State	L	195.075	190.775
	Stanford	L	196.8	
3/14	UC Davis	L	194.6	190.650
	Texas Women's University	L	192.825	
3/20	Denver	L	195.4	192.45
	Arizona	L	195.325	
3/27	Pac-10 Championships			191.475 (6th)

## 2009

### 2-20 • Head Coach: Cari DuBois

DATE	OPPONENT	W/L	OPPONENT	CAL SCORE
1/10	UC DAVIS	L	190.25	186.650
	SACRAMENTO STATE	L	191.975	
1/16	Oregon State	L	195.95	185.250
	Arkansas	L	195.925	
1/25	at UCLA	L	197.125	190.575
2/1	WASHINGTON	L	194.4	190.950
	ILLINOIS STATE	L	191.35	
2/13	Arizona State	L	193.725	191.475
2/22	STANFORD	L	197.175	190.625
3/1	ARIZONA	L	194.625	191.375
3/6	Western Michigan	L	191.300	189.650
3/8	Michigan State	L	195.05	190.725
	Ball State	L	191.825	
3/13	Sacramento State	L	194.7	191.975
	UC Davis	W	191.8	
	Seattle Pacific	W	187.225	
3/21	Pac-10 Championships			191.75 (7th)



# YEAR-BY-YEAR SCHEDULE & RESULTS

## 2008

### 8-16 • Head Coach: Cari DuBois

DATE	OPPONENT	W/L	OPPONENT	CAL SCORE
1/11	UC Davis	W	189.35	192.525
	Towson	W	186.35	
1/20	ARIZONA STATE	L	195.175	191.750
1/25	Washington	L	193.975	188.450
2/1	Arizona	L	194.650	190.425
2/10	OREGON STATE	L	195.175	191.325
2/17	UCLA	L	195.225	189.425
2/24	Stanford	L	197.375	193.100
2/29	Missouri	L	195.275	191.000
	Michigan	L	196.2	
	Ohio State	L	193.725	
3/7	Sacramento State	L	195.25	193.700
	UC Davis	W	192.625	
	Seattle Pacific	W	190.075	
3/16	SAN JOSE STATE	L	194.825	194.100
	CSU FULLERTON	W	193.95	
	UC DAVIS	W	191.325	
3/21	Boise State	L	1953.400	192.700
3/29	Pac-10 Championships			193.4 (5th)
4/12	NCAA West Regionals	Individuals		

## 2007

### 8-15 • Head Coach: Cari DuBois

DATE	OPPONENT	W/L	OPPONENT	CAL SCORE
1/19	Oregon State	L	195.400	191.875
2/4	STANFORD	L	196.075	189.925
2/9	Arizona State	L	196.400	190.900
	Oklahoma	L	196.275	
2/18	WASHINGTON	L	194.800	193.025
2/25	at UCLA	L	196.250	192.450
	Denver	L	193.7	
	CSU Fullerton	W	191.925	
3/2	ARIZONA	L	196.100	193.750
3/9	PENN	W	191.225	194.575
	AIR FORCE	W	183.5	
3/16	Denver	L	196.1	193.875
	BYU	W	193.8	
3/18	Air Force	W	185.600	191.725
3/23	UC Davis	W	193.15	196.500
	San Jose State	W	194.5	
	Sacramento State	W	195.15	
3/31	Pac-10 Championships			193.65 (7th)
4/14	NCAA WEST REGIONALS			193.9 (4th)

## 2006

### 8-18 • Head Coach: Cari DuBois

DATE	OPPONENT	W/L	OPPONENT	CAL SCORE
1/3	Aloha Gymfest			
	UCLA	L	193.775	189.35 (5th)
	Oregon State	L	191.925	
	Arkansas	L	190.625	
	Washington	L	190.425	
	Sacramento State	W	188.075	
1/13	Sacramento State	W	190.475	191.625
1/20	OREGON STATE	L	193.950	190.750
1/27	Arizona	L	195.875	191.325
2/3	STANFORD	L	195.925	192.150
2/10	UCLA	L	196.5	190.850
	SACRAMENTO STATE	L	192.5	
	UC DAVIS	W	190.3	
2/17	Washington	L	189.875	189.275
2/26	CSU Fullerton	W	192.325	193.000
3/3	Arizona State	L	196.250	191.850
3/10	West Virginia	L	194.45	191.000
	Pittsburgh	W	188.7	
3/12	George Washington	W	191.025	192.225
	NC State	W	191.925	
3/17	SAN JOSE STATE	W	193.350	194.275
3/25	Pac-10 Championships			192.725 (7th)
4/8	NCAA West Regionals	Individuals		

## 2005

### 6-18 • Head Coach: Cari DuBois

DATE	OPPONENT	W/L	OPPONENT	CAL SCORE
1/14	UC DAVIS	W	187.375	191.850
	BROWN	W	179.95	
1/23	at UCLA	L	197.15	191.175
	Sacramento State	W	190.375	
	CSU Fullerton	W	190.325	
1/28	UC Davis	W	187.050	190.175
2/4	ARIZONA	L	194.900	189.850
2/11	Arizona State	L	195.550	181.450
2/18	WASHINGTON	L	191.225	190.875
2/25	OREGON STATE	L	195.925	190.925
	SEATTLE PACIFIC	W	190.3	
3/4	UTAH	L	197.425	191.500
	FLORIDA	L	196.45	
	STANFORD	L	196.025	
3/7	Utah State	L	195.325	192.350
3/11	NC STATE	L	194.05	192.300
3/19	San Jose State	L	194.325	176.450
	Stanford	L	192.75	
3/26	Pac-10 Championships			163.55 (7th)

## 2004

### 9-12 • Head Coach: Cari DuBois

DATE	OPPONENT	W/L	OPPONENT	CAL SCORE
1/9	CSU Fullerton	W	192.625	193.125
1/16	Washington	L	195.850	193.600
	Sacramento State	W	188.9	
1/23	ARIZONA STATE	W	194.35	195.950
	UTAH STATE	W	193.925	
	SAN JOSE STATE	W	193.875	
1/30	OREGON STATE	W	195.550	195.675
2/6	Arizona	L	196.750	195.200
2/13	UCLA	L	197.8	195.000
	SEATTLE PACIFIC	W	190.025	
2/20	Stanford	L	198.875	195.75
2/27	Boise State	L	195.675	194.825
	Southern Utah	L	196.175	
3/6	Utah State	W	195.350	195.825
3/12	BALL STATE	W	194.625	196.800
3/20	Pac-10 Championships			195.625 (7th)
4/3	NCAA West Regionals			195.175 (5th)

## 2003

### 11-11 • Head Coach: Cari DuBois

DATE	OPPONENT	W/L	OPPONENT	CAL SCORE
1/12	Sacramento State	W	190.175	192.950
1/19	Bruin Invite (UCLA)			
	UCLA	L	198.275	192.95 (2nd)
	CSU Fullerton	W	191.525	
	UC Davis	W	189.675	
1/24	STANFORD	L	195.250	192.950
1/31	Boise State	W	194.875	195.40
2/9	CSU FULLERTON	W	194	196.375
	BOISE STATE	W	193.65	
	UC DAVIS	W	187.175	
2/14	Oregon State	L	197.025	194.550
2/21	WASHINGTON	W	194.85	196.475
	SACRAMENTO STATE	W	189.775	
2/28	Arizona State	L	197.825	196.100
3/7	ARIZONA	W	195.800	196.800
3/14	UC Davis	W	190.850	195.925
3/21	San Jose State	L	192.925	192.525
3/29	Pac-10 Championships			195.925 (7th)
4/12	NCAA West Regionals			195.025 (4th)
4/23	NCAA Championships	Individuals		

# YEAR-BY-YEAR SCHEDULE & RESULTS

## 2002

### 5-15 • Head Coach: Trina Tinti

DATE	OPPONENT	W/L	OPPONENT	CAL SCORE
1/12	CSU Fullerton	W	192.175	193.925
1/18	OREGON STATE	W	193.125	193.250
1/25	Seattle Pacific	W	187.300	189.100
1/27	Washington	L	194.800	192.625
2/3	ARIZONA STATE	L	195.025	191.525
2/8	Arizona	L	194.725	138.825
2/17	CAL INVITATIONAL			
	UCLA	L	194.825	192.825
	UC DAVIS	W	190.55	
	UC SANTA BARBARA	W	185.5	
2/22	Stanford	L	195.750	191.700
3/3	Sacramento State	L	193.175	151.450
3/16	SACRAMENTO STATE	L	194.35	191.975
	BOISE STATE	L	194.275	
	SAN JOSE STATE	L	193.775	
3/23	Pac-10 Championships			189.7 (7th)
4/6	NCAA West Regionals	Individuals		

## 2001

### 15-15 • Head Coach: Trina Tinti

DATE	OPPONENT	W/L	OPPONENT	CAL SCORE
1/13	Denver	L	194.175	191.650
	Washington	L	192.9	
	Maryland	L	191.925	
1/19	San Jose State	W	191.975	194.400
	Oklahoma	W	194.025	
	Arizona	W	190.775	
1/21	OKLAHOMA STATE	L	195.3	195.175
	UTAH STATE	W	193.85	
	ARIZONA	W	193.35	
1/28	OREGON STATE	L	195.575	195.000
2/3	CSU Fullerton	L	194.750	192.600
2/9	WASHINGTON	W	192.175	194.000
	UC DAVIS	W	188.525	
2/18	STANFORD	L	196.950	196.075
2/23	Arizona State	L	197.125	194.875
	Boise State	W	193.225	
	UC Santa Barbara	W	195.075	
2/25	UC Davis	W	190.800	195.575
3/4	at UCLA	L	197.7	195.025
	Utah State	W	192.225	
	UC Santa Barbara	W	188.575	
3/10	UC Davis	W	192.375	194.700
	Seattle Pacific	W	189.925	
3/16	San Jose State	W	193.550	194.125
3/24	Pac-10 Championships			193.75 (7th)
4/7	NCAA West Regionals			192.175 (4th)

## 2000

### 11-12 • Head Coach: Trina Tinti

DATE	OPPONENT	W/L	OPPONENT	CAL SCORE
1/14	Seattle Pacific	W	183.675	188.575
1/16	Washington	L	193.375	191.525
1/21	ARIZONA STATE	L	191.925	190.200
1/28	OREGON STATE	L	193.675	192.000
2/4	Arizona	L	194.25	193.225
	Southern Utah	W	191.65	
2/11	CAL INVITATIONAL			
	UCLA	L	196.425	192.175 (2nd)
	UC DAVIS	W	187.55	
	UC SANTA BARBARA	W	185.15	
2/18	Stanford	L	195.350	193.150
2/24	UC Davis	W	190.625	194.750
2/26	San Jose State	W	192.800	195.325
3/3	SAN JOSE STATE	W	191.525	194.075
	CSU FULLERTON	L	194.425	
	SACRAMENTO STATE	L	194.275	
3/11	Boise State	W	195.850	195.975
	Seattle Pacific	W	189.375	
3/18	Pac-10 Championships			194.675 (5th)

## 1999

### 6-21 • Head Coach: Trina Tinti

DATE	OPPONENT	W/L	OPPONENT	CAL SCORE
1/15	UC DAVIS	W	182.375	188.350
	UC SANTA BARBARA	W	161.425	
1/22	STANFORD	L	193.775	188.350
1/29	Utah State	L	192.950	180.425
2/5	ARIZONA	L	192.050	190.200
2/12	Oregon State	L	193.600	190.025
2/19	WASHINGTON	L	193.6	192.475
	SAN JOSE STATE	W	189.075	
2/26	Arizona State	L	195.875	189.550
	Denver	L	193.475	
	Illinois State	W	187.825	
2/28	Nebraska	L	195.725	188.850
	Arizona State	L	195.25	
	Maryland	L	195.2	
3/7	Bruin Classic (UCLA)			
	UCLA	L	196.5	191.525 (4th)
	Michigan State	L	193.05	
	Kentucky	L	191.95	
3/12	Sacramento State	L	190.575	190.225
	UC Davis	W	188.075	
	Air Force	W	187.15	
3/20	Pac-10 Championships			192.475 (7th)
3/26	at Stanford	L	197.200	192.200
4/19	NCAA West Regionals	Individuals		

## 1998

### 8-15 • Head Coach: Trina Tinti

DATE	OPPONENT	W/L	OPPONENT	CAL SCORE
1/16	OREGON STATE	L	190.57	185.825
	CSU FULLERTON	W	185.45	
1/23	Washington	L	191.25	186.650
	Utah State	L	187.125	
	Sacramento State	W	178.825	
1/30	ARIZONA STATE	L	191.575	188.075
	SEATTLE PACIFIC	W	184.575	
	SACRAMENTO STATE	W	182.1	
2/6	Arizona	L	193.775	190.125
	Washington	L	193.975	
	Illinois-Chicago	W	187.725	
2/13	UCLA	L	195.300	188.700
2/20	Stanford	L	193.450	190.675
2/27	UC Santa Barbara	W	185.175	190.150
3/6	UC DAVIS	W	187.5	189.525
3/14	CSU Fullerton	L	187.525	187.875
	UNC	W	188.225	
3/21	Pac-10 Championships			189.2 (7th)
4/4	NCAA West Regionals			190.6 (6th)

## 1997

### 9-17 • Head Coach: Alfie Mitchell

DATE	OPPONENT	W/L	OPPONENT	CAL SCORE
1/17	CAL INVITATIONAL			
	ARIZONA	L	193.45	192.775 (2nd)
	ILLINOIS-CHICAGO	W	190.35	
	IOWA	W	187.875	
1/27	Oregon State	L	193.2	189.250
	Seattle Pacific	W	185.95	
2/1	UCLA Invite			
	UCLA	L	195.15	190.800 (3rd)
	LSU	L	192.725	
	UC Santa Barbara	W	186.725	
2/7	WASHINGTON	L	194.225	193.200
	UC DAVIS	W	190.425	
2/14	STANFORD	L	194.150	192.850
2/21	Arizona State	L	195.950	192.925
2/23	Nebraska	L	196.625	191.500
	Arizona State	L	195.6	
	Eastern Michigan	W	188.675	

## YEAR-BY-YEAR SCHEDULE & RESULTS

3/8	San Jose State	W	188.175	190.400
	UC Santa Barbara	W	189.65	
	Sacramento State	W	189.65	
3/14	Boise State	L	194.325	191.600
	Washington	L	194.125	
3/22	Pac-10 Championships			194.325 (7th)
4/5	NCAA West Regionals			193.05 (6th)

### 1996

#### 16-12 • Head Coach: Alfie Mitchell

DATE	OPPONENT	W/L	OPPONENT	CAL SCORE
1/19	ARIZONA	L	191.875	190.875 (2nd)
	SACRAMENTO STATE	W	185.725	
	SAN JOSE STATE	W	183.6	
1/26	Denver	L	190.5	188.500
	Oklahoma	W	186.425	
	Air Force	W	182.35	
2/3	WASHINGTON	W	192.650	192.675
2/9	UC Davis	W	185.5	190.800
	UC Santa Barbara	W	188.05	
2/16	Arizona State	L	195.85	191.400
	Nebraska	L	193.925	
	Utah State	W	190.775	
2/24	at UCLA	L	194.8	192.300
	Denver	W	191.05	
	Seattle Pacific	W	187	
3/8	CAL INVITATIONAL			
	MICHIGAN STATE	W	193.575	193.925 (1st)
	WEST VIRGINIA	W	192.35	
	BOISE STATE	W	191.15	
	BALL STATE	W	190.925	
	UC SANTA BARBARA	W	187.25	
3/16	OREGON STATE	L	196.025	191.925
3/23	Pac-10 Championships			192.375 (7th)
3/29	STANFORD	W	193.050	194.100
4/13	NCAA West Regionals			191.25 (7th)

### 1995

#### 7-18 • Head Coach: Alfie Mitchell

DATE	OPPONENT	W/L	OPPONENT	CAL SCORE
1/13	Stanford	L	190.575	184.200
1/20	San Jose State	W	182.4	188.100
	UC Davis	W	178.475	
1/27	UCLA	L	189.125	186.075
	STANFORD	L	188.425	
	DENVER	W	185.125	
2/3	OREGON STATE	L	191.175	188.450
2/11	Gilda Marx Invite (UCLA)			
	UCLA	L	194.7	186.7 (4th)
	Arizona State	L	191.825	
	CSU Fullerton	L	190.475	
2/18	UC SANTA BARBARA	L	186.925	186.675
	UC DAVIS	W	181.425	
3/5	ALASKA-ANCHORAGE	W	180.225	191.150
3/12	Bulldog Invite (Georgia)			
	Georgia	L	197.625	191.825 (4th)
	UCLA	L	196.475	
	Nebraska	L	193.25	
	Penn State	W	191.55	
	UMass	W	190.525	
3/19	WASHINGTON	L	194.050	190.425
3/25	Pac-10 Championships			190.275 (7th)
4/8	NCAA West Regionals			191.65 (5th)

### 1994

#### 14-8 • Head Coach: Alfie Mitchell

DATE	OPPONENT	W/L	OPPONENT	CAL SCORE
1/14	Oregon State	L	189.825	184.575
1/23	UC Davis	W	178.05	188.15
1/28	UC Santa Barbara	L	188.625	188.25
	San Jose State	W	180.45	

2/4	STANFORD	W	188.8	189.725
2/11	Arizona	W	188.35	190.45 (1st)
	Ohio State	W	188.9	
	UMass	W	189.175	
2/18	SAN JOSE STATE	W	177.450	188.400
2/25	Stanford	W	189.650	189.875
	Minnesota	W	187.525	
	UC Davis	W	183.4	
3/4	ARIZONA STATE	W	190.350	192.250
3/11	ILLINOIS	W	182.457	189.625
	SEATTLE PACIFIC	W	181.95	
	SACRAMENTO STATE	W	181.9	
3/26	Pac-10 Championships			186.925 (7th)
4/9	NCAA West Regionals			190.025 (5th)
4/21-23	NCAA Championships (Utah)	Individuals		

### 1993

#### 8-12 • Head Coach: Pam Burgess

DATE	OPPONENT	W/L	OPPONENT	CAL SCORE
1/15	Arizona State	L	192.70	185.60
1/22	STANFORD	L	188.15	186.45
1/29	Stanford	L	189.925	183.975
	UC Santa Barbara	W	183.15	
2/6	BYU	W	151.50	184.85
2/13	ARIZONA	L	193	185.95
	UC SANTA BARBARA	L	186.95	
2/20	UCLA Invite			
	UCLA	L	194.25	184.95 (3rd)
	Arizona State	L	191.35	
	Minnesota	W	184.9	
	Illinois	W	183.55	
2/26	WASHINGTON	W	189.75	190.05
	SEATTLE PACIFIC	W	184.5	
3/12	Pac-10 Championships			189.4 (6th)
3/18	UC DAVIS	W	184.85	189.20
4/3	NCAA West Regionals	Individuals		

### 1992

#### 10-8 • Head Coach: Pam Burgess

DATE	OPPONENT	W/L	OPPONENT	CAL SCORE
1/17	UC SANTA BARBARA	W	184.10	188.10
1/24	UC Davis	W	182.4	187.55
	UC Santa Barbara	W	183.55	
1/31	NEW MEXICO	W	187.8	190.35
	UC DAVIS	W	184.45	
	SEATTLE PACIFIC	W	181.6	
2/14	Washington	L	191.25	188.60
2/15	Seattle Pacific	W	185.40	189.80
2/28	Stanford	W	189.05	189.65
	Sacramento State	W	175.55	
3/13	Oregon State	L	194.65	189.20
3/21	UCLA	L	192.25	191.45
3/28	Pac-10 Championships			189.95 (6th)
4/11	NCAA WEST REGIONALS			192.1 (3rd)
4/24-25	NCAA Championships			190.7 (8th)

# YEAR-BY-YEAR SCHEDULE & RESULTS

## 1991

### 17-14 • Head Coach: Pam Burgess

DATE	OPPONENT	W/L	OPPONENT	CAL SCORE
1/12	SAN JOSE STATE	W	175.20	183.65
1/18	STANFORD	L	185.4	183.60
	NEW HAMPSHIRE	W	182.25	
	UC DAVIS	W	179.5	
1/26	Stanford	L	186.7	185.30
	UC Davis	W	175.65	
	Sacramento State	W	158.45	
2/8	CAL INVITATIONAL			
	OREGON STATE	L	189.75	188.4 (2nd)
	SEATTLE PACIFIC	W	180.25	
	UC SANTA BARBARA	W	175.75	
2/15	Arizona	L	189.25	186.45
2/22	ARIZONA STATE	W	186.7	188.15
	UC SANTA BARBARA	W	178.15	
	SACRAMENTO STATE	W	167.65	
3/2-3	at UCLA	L	191	185.55 (4th)
	Oregon State	L	193.25	
	Arizona State	L	189.25	
3/8	Oregon State	L	192.95	188.05
	Seattle Pacific	W	183.5	
3/10	BALL STATE	W	182.45	187.70
	ALASKA-ANCHORAGE	W	175.20	
3/16	Pac-10 Championships			186.9 (7th)
3/23	San Jose State	W	181.2	187.80
	UC Davis	W	184.4	
	UC Santa Barbara	W	178.4	
	Sacramento State	W	172.2	
4/6	NCAA West Regionals			190.55 (2nd)
4/19-20	NCAA Championships (Alabama) Individuals			

## 1990

### 11-11 • Head Coach: Pam Burgess

DATE	OPPONENT	W/L	OPPONENT	CAL SCORE
1/12	WASHINGTON	L	183.45	183.25
1/26	at UCLA	L	188.65	178.35
1/28	STANFORD	W	180.1	182.60
2/9	CAL INVITATIONAL			
	BOISE STATE	W	181	186.2 (1st)
	UC SANTA BARBARA	W	179.85	
	CAL POLY SAN LUIS OBISPO	W	172	
2/16	Southwest Cup			
	Arizona State	L	189.3	184.45 (3rd)
	CSU Fullerton	L	187.6	
	Maryland	W	178.1	
2/24	New Hampshire	W	183.25	183.30
	Northeastern	W	183.15	
3/2	ARIZONA	L	189.60	187.55
3/9	Hobee Invite			
	CSU Fullerton	L	189.85	186.5 (2nd)
	Stanford	W	186.4	
	Michigan	W	181.6	
3/17	Pac-10 Championships			185.4 (5th)
3/23	Cal Poly San Luis Obispo	L	185.50	185.35
4/7	NCAA West Regionals			185.9 (T5th)
4/20-21	NCAA Championships	Individuals		

## 1989

### 5-14 • Head Coach: Pam Burgess

DATE	OPPONENT	W/L	OPPONENT	CAL SCORE
1/13	Husky Classic			
	Nebraska	L	187.15	176.4 (5th)
	Arizona	L	186.15	
	Oregon State	L	184.7	
	Washington	L	183.2	
1/21	STANFORD	W	183.45	185.45
1/27	OREGON STATE	L	185.60	183.25
2/4	UC Davis	incomplete team		
2/10	CAL POLY SAN LUIS OBISPO	W	179.85	184.90

	SACRAMENTO STATE	W	168.75	
2/18	Boise State	L	184.65	182.45
3/4	Pac-10 Championships			185 (7th)
3/12	Stanford	L	189.55	185.40
3/17	CAL INVITATIONAL			
	UCLA	L	192.6	182.25 (2nd)
	SOUTHERN UTAH STATE	W	165.05	
3/24	San Jose State	W	182.95	186.30
3/31-4/1	NCAA West Regionals			183.3 (7th)

## 1988

### 7-15 • Head Coach: Pam Burgess

DATE	OPPONENT	W/L	OPPONENT	CAL SCORE
1/23	CAL INVITATIONAL			
	STANFORD	L	175.6	174.45 (2nd)
	CAL POLY SAN LUIS OBISPO	W	169.45	
	CHICO STATE	W	133.95	
1/30	Oregon State	L	185.05	176.15
2/7	WASHINGTON	L	180.90	178.65
2/13	at UCLA	L	185.1	176.50
	UC Santa Barbara	W	174.3	
2/19	Washington	L	184.2	177.75
	UC Santa Barbara	W	175.85	
2/20	Seattle Pacific	L	181.45	179.2
2/26	Arizona	L	185.35	179.35
	Missouri	W	179.00	
3/4	ARIZONA STATE	L	183.55	178.55
	NORTHERN MICHIGAN	W	175.4	
3/5	WESTERN MICHIGAN	L	180.30	179.05
3/13	BOISE STATE	W	181.35	183.15
3/26	Pac-10 Championships			179.55 (7th)
4/9	NCAA West Regionals	Individuals		

## 1987

### 10-18 • Head Coach: Pam Burgess

DATE	OPPONENT	W/L	OPPONENT	CAL SCORE
1/17	Oregon State	L	179.20	174.70
1/24	at UCLA	L	186.8	174.80
	Santa Barbara	W	166.45	
1/31	CAL INVITATIONAL			
	WASHINGTON	W	179.55	180.4(1st)
	STANFORD	W	176.15	
	UC SANTA BARBARA	W	170.15	
2/6	Stanford	L	181	178.55
	New Mexico	L	180.8	
2/13	Seattle Pacific	W	176.95	181.45
	San Jose State	W	173.45	
2/14	Arizona State	L	185.80	178.35
2/21	STANFORD	W	171.45	177.95
2/27	Georgia	L	185.8	170.80
	Florida	L	184.4	
	Georgia College	W	165.5	
3/6	Shanico Invitational			
	Washington	L	184.5	175.9 (6th)
	Arizona	L	184.45	
	Oregon State	L	183.2	
	Boise State	L	179.15	
	Washington State	L	176.65	
3/13	WASHINGTON STATE	W	176.65	178.9
3/28	Pac-10 Championships			178.65 (7th)
4/11	NCAA West Regionals			178.15 (6th)

## 1986

### 11-9 • Head Coach: Pam Burgess

DATE	OPPONENT	W/L	OPPONENT	CAL SCORE
1/16	WASHINGTON	L	179.5	177.70
	MARYLAND	W	175.8	
1/18	OREGON STATE	W	176.60	177.50
1/24	Utah	L	186.05	180.15
	Washington	L	182.55	
1/25	Utah State	L	178.45	178.15

## YEAR-BY-YEAR SCHEDULE & RESULTS

2/1	San Jose State	W	168.10	176.20
2/9	OREGON	W	173.70	180.65
2/15	Washington	L	185.6	182.00
	Stanford	W	181.7	
2/22	Oregon State	L	182.45	181.00
2/28	Stanford	W	178.05	179.8
	Georgia	L	180.6	
	Michigan	W	167.98	
3/9	NEW MEXICO	W	173.45	180.20
3/15	STANFORD	W	179.90	184.85
3/22	NorPac Championships			183.15 (3rd)
4/5	NCAA West Regionals			181 (6th)
4/18-19	NCAA Championships (Florida)	Individuals		

### 1985

#### 10-15 • Head Coach: Diane Dunbar

DATE	OPPONENT	W/L	OPPONENT	CAL SCORE
1/18	CAL INVITATIONAL			
	ARIZONA STATE	L	181.25	174.9 (3rd)
	USC	L	176.5	
	SAN JOSE STATE	W	169	
1/26	WASHINGTON STATE	W	173.1	175.35
	CSU NORTHRIDGE	W	169.15	
	SONOMA STATE	W	119.7	
2/1	Oregon State	L	182.25	171.65
2/2	Oregon	W	168.45	173.70
2/9	STANFORD	L	180.2	130.15
2/15	Cardinal Classic			
	Stanford	L	182.3	175.5 (4th)
	San Diego State	L	176.4	
	Washington	L	179.00	
2/16	WASHINGTON	L	181.75	158.10
3/1	Arizona	L	182.1	175.1
	UCLA	L	178.55	
3/2	Arizona State	L	188.7	178.40
	Nebraska	L	182.35	
	UCLA	W	177.6	
3/10	UTAH STATE	W	178.7	180.75
	CSU LONG BEACH	W	174.6	
3/16	NorPac Championships			173.6 (4th)
3/30	NCAA West Regionals	Individuals		
4/12-13	NCAA Championships (Utah)	Individuals		

### 1984

#### 15-13 • Head Coach: Diane Dunbar

DATE	OPPONENT	W/L	OPPONENT	CAL SCORE
12/28	Aloha Gymfest			
	Arizona State	L	182.6	170.95 (5th)
	Oregon State	L	176.35	
	USC	L	173.95	
	Washington	L	178.95	
	Boise State	W	154.05	
1/7	UCLA	L	180.75	178.55
1/21	GOLDEN BEAR INVITE			
	ARIZONA	L	178.9	175.75 (3rd)
	OREGON STATE	L	178.8	
	NEW MEXICO	W	174.7	
1/27	CSU Fullerton	L	183.65	174.95
	CSU Northridge	W	151.95	
2/4	CAL INVITATIONAL			
	STANFORD	L	179.15	177.65 (3rd)
	WASHINGTON	L	177.85	
	DENVER	W	170.95	
2/10	Washington	L	182.15	171.55
	Oregon State	L	180.2	
2/11	Washington State	L	176.9	175.20
	BYU	W	174.1	
	Seattle Pacific	W	172	
2/18	San Jose State	W	168.30	177.25
2/25	OREGON	W	168.8	181.00
	UC DAVIS	W	166.25	
3/2	Stanford	W	181.70	183.80
3/9	NorPac Championships			183.9 (1st)
3/24	NCAA West Regionals			179.45 (5th)
4/6-7	NCAA Championships	Individuals		

### 1983

#### 9-8 • Head Coach: Diane Dunbar

DATE	OPPONENT	W/L	OPPONENT	CAL SCORE
1/21	SAN JOSE STATE	W	121.45	171.3
1/29	CAL INVITATIONAL			
	WASHINGTON	L	174.7	171.5 (3rd)
	STANFORD	L	172.2	
	CSU LONG BEACH	W	169.05	
2/4	Oregon State	L	180.55	166.9
2/6	WASHINGTON STATE	W	169.45	176.4
2/11	Stanford	L	174.95	173.05
2/19	MINNESOTA	W	177.15	177.25
2/25	UC Davis	W	159.05	174.45
	San Francisco State	W	164.4	
	Oregon State	W	67.65	
2/28	UTAH	L	184.05	179.55
3/3	CSU Long Beach	W	173.05	174.4
3/4	San Diego State	L	177.75	176.05
3/11-12	NorPac Championships			177.6 (3rd)
3/25-26	NCAA Regionals			174 (7th)

### 1982

#### 8-9 • Head Coach: Diane Dunbar

DATE	OPPONENT	W/L	OPPONENT	CAL SCORE
1/9/82	CAL INVITATIONAL			
	NEW MEXICO	L	135.3	128.5 (4th)
	WASHINGTON	L	132.35	
	CSU NORTHRIDGE	L	131.05	
	UC DAVIS	W	127.65	
1/16	CSU Long Beach	W	129.05	129.85
1/29	Stanford	L	141.7	125.85
2/6	FRESNO STATE	W	128.8	131.70
2/7	USC	L	141	130.8
	OREGON	L	132.25	
2/12	Seattle Pacific	W	126.1	128.75
2/13	Washington	L	136.1	129.65
2/26	San Jose State	L	130.1	135.85
	UC Davis	W	136.95	
	San Francisco State	W	134.25	
3/6-7	NorCal Championships			136.85 (2nd)

### 1981

#### 6-15 • Head Coach: Dale Flansaas

DATE	OPPONENT	W/L	OPPONENT	CAL SCORE
12/6/80	Stanford Collegiate Pairs Inv.	N/A		117 (3rd)
1/10/81	CAL INVITATIONAL			
	WASHINGTON	L	132.75	120.25
	UC DAVIS	L	127.9	
	DENVER	L	127.1	
	SACRAMENTO STATE	L	121.45	
	CSU NORTHRIDGE	W	118.7	
	SAN FRANCISCO STATE	W	111.7	
	CSU HAYWARD	W	110.2	
1/16	San Jose State	W	113.0	125.15
1/30	Fresno State	L	121.25	120.05
	Cal Poly Pomona	W	107.4	
2/13	Arizona State	L	142.65	119.10
	Oregon	L	130.8	
2/15	UCLA Invitational	N/A		119.65 (7th)
2/21	STANFORD	L	139.85	126.10
2/28	ARIZONA	L	133.0	128.5
3/6	at BYU	L	141.95	132.5
	Oregon	L	136.8	
3/7	Northern Colorado	L	131.35	128.55
	Denver	L	136.35	
3/21	NorCal Championships			130.8 (3rd)
3/27-28	WIAW Regionals	Individuals		
4/10	AIAW Nationals (Utah)	Individuals		

# YEAR-BY-YEAR SCHEDULE & RESULTS

## 1980

### 6-11 • Head Coach: Dale Flansaa

DATE	OPPONENT	W/L	OPPONENT	CAL SCORE
1/5	CAL INVITATIONAL			
	DENVER	L	118.45	118.4 (2nd)
	WASHINGTON	W	117.25	
	CHICO STATE	W	110.25	
	UC DAVIS	W	109.55	
1/24	OREGON	L	132.45	122.0
	SEATTLE PACIFIC	W	109.75	
1/26	OREGON STATE	L	139.20	124.75
2/2	FRESNO STATE	L	132.1	126.75
	NORTHERN COLORADO	W	121.15	
2/8	at San Jose State	L	125.25	122.75
2/15	at Stanford	L	137.45	129.10
2/29	UCLA Invitational	L	N/A	126.35 (7th)
3/10	BYU	L	139	130.95
	NEW MEXICO	L	133.2	
3/14	NorCal Championships			130.55 (3rd)
3/21-22	WAIAW Regionals (SDSU)			130.33 (8th)
4/5-6	AIAW Nationals (LSU)	Individuals		

## 1979

### 5-10 • Head Coach: Dan Millman

DATE	OPPONENT	W/L	OPPONENT	CAL SCORE
12/9/78	Sonoma State Invitational	L	N/A	105.75(5th)
1/6/79	CAL INVITATIONAL			
	ARIZONA STATE	L	117.25	109.65 (4th)
	UCLA	L	116.25	
	UC DAVIS	L	112.8	
	SACRAMENTO STATE	W	109.15	
	CHICO STATE	W	98.7	
1/12	at USC	L	133.4	115.5
1/19	Sacramento State	L	119.95	108.85
1/26	Fresno State	W	90.5	101.7
2/3	SAN JOSE STATE	L	122.80	108.15
2/9	Oregon State	L	125.6	108.1
2/25	STANFORD	W	117.65	119.10
3/10	NorCal Championships (SJSU)	L	130.55	119.15 (3rd)
3/16-17	WAIAW Regionals (SJSU)	Individuals		

## 1978

### 3-12 • Head Coach: Dan Millman

DATE	OPPONENT	W/L	OPPONENT	CAL SCORE
1/12	CSU NORTHRIDGE	W	103.75	107.1
1/28	Stanford	W	116.1	117.15
	Fresno State	W	92.1	
2/4	SAN JOSE STATE	L	121.75	108.05
2/11	Fresno State	L	99.2	85.2
2/14	San Jose State	L	125.95	52.60
2/17	CAL INVITATIONAL			
	OREGON STATE	L	128.6	4th - Inc. team
	ARIZONA STATE	L	126.8	
	WASHINGTON	L	123.8	
2/23	San Diego State	L	132.5	88.65
	Northern Colorado	L	127.95	
2/25	FRESNO STATE	L	102.00	85.20
3/3	NorCal Championships (SJSU)	L	131.80	68.9 (4th)

## 1977

### 5-4 • Head Coach: Molly Rackham

DATE	OPPONENT	W/L	OPPONENT	CAL SCORE
1/12	Sacramento State	L	N/A	N/A
	Sonoma State	W	N/A	N/A
1/29	CHICO STATE	L	194.3	145.72
	FRESNO STATE	W	114	
2/4	San Jose State	L	107.55	113.15
	Nevada-Reno	W	125.35	

2/9	San Francisco State	W	90.35	106.20
2/11	UC Davis	L	116.05	112.35
	Sonoma State	W	63	
3/5	NCIAC Championships	N/A	N/A	N/A (7th)

## 1976

### 0-3\* • Head Coach: Debbie Bailey

DATE	OPPONENT	W/L	OPPONENT	CAL SCORE
1/15	San Jose State	L	189.40	185.80
1/20	CSU HAYWARD	N/A	N/A	N/A
1/24	SACRAMENTO STATE	L	198.85	193.85
2/4	SAN FRANCISCO STATE	N/A	N/A	N/A
2/14	Chico State	N/A	N/A	N/A
2/21	Fresno State	N/A	N/A	N/A
2/27	NEVADA-RENO	L	97.95	89.85
3/6	NCIAC Championships	N/A	N/A	94.8 (3rd)

## 1975

### 1-0\* • Head Coach: Debbie Bailey

DATE	OPPONENT	W/L	OPPONENT	CAL SCORE
2/10	CSU LONG BEACH	W	64.65	65.85
2/15	Humboldt	N/A	N/A	N/A
2/20	Sonoma	N/A	N/A	N/A
3/1	NCIAC Championship (SFSU)	N/A	N/A	N/A
3/5	San Francisco State	N/A	N/A	N/A
3/7	FRESNO STATE	N/A	N/A	N/A
3/14-15	WAIAW Regionals (Nevada)	N/A	N/A	N/A
3/22	DGWS Optionals (Consumnes)	N/A	N/A	N/A
4/4-6	AIAW Nationals (CSU Hayward)	N/A	N/A	N/A
4/16	San Jose State (SFSU)	N/A	N/A	N/A
	Sacramento (SFSU)	N/A	N/A	N/A

## 1974

### 4-3\* • Head Coach: Sue Williamson

DATE	OPPONENT	W/L	OPPONENT	CAL SCORE
2/14	Consumnes	N/A	N/A	N/A
	Fresno State	N/A	N/A	
2/23	Sonoma State	W	64.12	149.93
	Fresno State	W	72.71	
3/2	DGWS Optionals (Cosumnes)	N/A	N/A	N/A
3/15-17	AIAW Regionals (San Diego)	N/A	N/A	N/A
3/23	NCIAC Championships (SJSU)	N/A	N/A	N/A
4/4-6	AIAW Championships (Sacramento)	Individuals		
4/20	Chico State	W	156.5	180.65
	San Jose State	L	220.8	
	Sonoma State	W	103.8	
4/27	CSU HAYWARD	L	257.85	199.20
	SAN JOSE STATE	L	236.65	

\* indicates records are incomplete  
N/A indicates no score available

## SERIES RECORDS

\*Regular season records include conference championship competition records

Team	Regular Season	NCAA Regionals	NCAA Champs	All-Time
Air Force	4-0			4-0
Alabama	Have Not Met	0-1	0-1	0-2
Alaska-Anchorage	3-0			3-0
<b>ARIZONA</b>	<b>7-50</b>		<b>0-1</b>	<b>7-51</b>
<b>ARIZONA STATE</b>	<b>8-55</b>	<b>0-1</b>	<b>0-1</b>	<b>8-57</b>
Arkansas	0-2	0-1		0-3
Auburn	1-0			1-0
Ball State	3-1			3-1
Boise State	8-7	7-6		15-13
Brown	2-0			2-0
BYU	3-2	1-1	1-0	5-3
Cal Poly Pomona	1-0			1-0
Cal Poly SLO	3-1			3-1
Centenary College	1-0			1-0
Chico State	4-1			4-1
CSU Fullerton	9-7	5-7		14-14
CSU Hayward	1-1			1-1
CSU Long Beach	5-0			5-0
CSU Northridge	4-1			4-1
<b>DENVER</b>	<b>3-11</b>	<b>0-1</b>		<b>3-12</b>
Eastern Michigan	1-1			1-1
Florida	0-2		1-0	1-2
Fresno State	9-6	0-1		9-7
George Washington	1-0			1-0
Georgia	0-3	0-1	0-1	0-5
Georgia College	1-0			1-0
Illinois	2-0	0-1		2-1
Illinois State	3-0			3-0
Illinois-Chicago	3-2			3-2
Iowa	1-0			1-0
Iowa State	1-0			1-0
Kentucky	1-2			1-2
LSU	0-1			0-1
Maryland	2-3			2-3
Michigan	2-2			2-2
Michigan State	1-2			1-2
Minnesota	3-0	1-1		4-1
Missouri	1-1	0-1		1-2
NC State	1-1			1-1
Nebraska	0-7	0-1		0-8
Nevada-Reno	1-1			1-1
New Hampshire	2-0			2-0
New Mexico	3-3			3-3
Northeastern	1-0			1-0
Northern Colorado	1-2			1-2
Northern Michigan	1-0			1-0
Ohio State	1-1			1-1
Oklahoma	2-1	0-2		2-3
Oklahoma State	0-1			0-1
Oregon	6-4			6-4
<b>OREGON STATE</b>	<b>6-68</b>	<b>0-16</b>	<b>0-1</b>	<b>6-85</b>
Penn	2-0			2-0
Penn State	1-0		0-1	1-1
Pittsburgh	1-0			1-0
<b>SACRAMENTO STATE</b>	<b>22-13</b>	<b>1-0</b>		<b>23-13</b>
San Diego State	0-3	0-1		0-4
San Francisco State	4-0			4-0
<b>SAN JOSE STATE</b>	<b>30-20</b>	<b>1-0</b>		<b>31-20</b>

Team	Regular Season	NCAA Regionals	NCAA Champs	All-Time
<b>SEATTLE PACIFIC</b>	<b>22-1</b>			<b>22-1</b>
Sonoma State	4-0			4-0
Southern Conn.	1-0			1-0
<b>SOUTHERN UTAH</b>	<b>2-1</b>	<b>0-1</b>		<b>2-2</b>
<b>STANFORD</b>	<b>18-73</b>	<b>4-8-1</b>	<b>1-0</b>	<b>23-81-1</b>
Temple	1-0			1-0
TWU	0-1			0-1
Towson	1-0			1-0
<b>UC DAVIS</b>	<b>43-7</b>	<b>1-0</b>		<b>44-7</b>
UC Santa Barbara	21-3	1-0		22-3
<b>UCLA</b>	<b>2-60</b>	<b>1-13</b>	<b>1-0</b>	<b>4-73</b>
UMass	2-0			2-0
UNC	1-1			1-1
USC	0-4	0-1		0-5
<b>UTAH</b>	<b>0-8</b>	<b>0-2</b>	<b>0-1</b>	<b>0-11</b>
Utah State	6-4			6-4
<b>WASHINGTON</b>	<b>12-66</b>	<b>3-11</b>		<b>15-77</b>
Washington State	4-1			4-1
West Virginia	1-1			1-1
Western Michigan	0-2			0-2

2015 opponents listed in **BOLD**

## CAL AT THE PAC-12 CHAMPIONSHIPS

### 2014

#### at Berkeley, Calif.

Place	Team	Score
1.	Utah	197.925
2.	Stanford	197.175
<b>3.</b>	<b>Cal</b>	<b>196.550</b>
4.	UCLA	196.525
5.	Oregon State	196.275
6.	Arizona	196.250
7.	Arizona State	195.500
8.	Arizona State	195.125

### 2013

#### at Corvallis, Ore.

Place	Team	Score
1.	Oregon State	197.850
2.	UCLA	197.375
3.	Utah	197.075
4.	Stanford	196.062
5.	Washington	195.875
6.	Arizona	195.525
<b>7.</b>	<b>Cal</b>	<b>195.075</b>
8.	Arizona State	193.425

### 2012

#### at Salt Lake City, Utah

Place	Team	Score
1.	UCLA	197.425
2.	Utah	197.375
3.	Oregon State	197.025
4.	Stanford	196.825
5.	Arizona	195.900
6.	Arizona State	194.550
7.	Washington	194.125
<b>8.</b>	<b>Cal</b>	<b>193.525</b>

### 2011

#### at Los Angeles, Calif.

Place	Team	Score
1.	Oregon State	197.200
2.	UCLA	196.750
3.	Washington	196.025
4.	Stanford	195.975
5.	Arizona	195.475
<b>6.</b>	<b>Cal</b>	<b>191.575</b>
7.	ASU	190.450

### 2010

#### at Tucson, Ariz.

Place	Team	Score
1.	UCLA	196.350
2.	Stanford	196.550

3.	Oregon State	195.950
4.	Arizona	195.875
5.	Washington	193.825
<b>6.</b>	<b>Cal</b>	<b>191.475</b>
7.	ASU	190.675

### 2009

#### at Stanford Calif.

Place	Team	Score
1.	UCLA	196.625
2.	Oregon State	196.550
3.	Stanford	196.525
4.	Washington	194.375
5.	Arizona	194.325
6.	ASU	194.000
<b>7.</b>	<b>Cal</b>	<b>191.750</b>

### 2008

#### at Seattle, Wash.

Place	Team	Score
1.	Stanford	197.000
2.	Oregon State	196.550
3.	UCLA	196.200
4.	Arizona	195.725
<b>5.</b>	<b>Cal</b>	<b>193.400</b>
6.	Washington	193.375
7.	ASU	191.925

### 2007

#### at Tempe, Ariz.

Place	Team	Score
1.	UCLA	197.200
2.	Stanford	196.950
3.	Oregon State	196.300
4.	Arizona	196.000
5.	Washington	194.775
6.	ASU	194.550
<b>7.</b>	<b>Cal</b>	<b>193.650</b>

### 2006

#### at Corvallis, Ore.

Place	Team	Score
1.	Stanford	197.100
2.	UCLA	196.800
3.	Oregon State	196.400
4.	ASU	193.900
5.	Arizona	193.750
6.	Washington	192.750
<b>7.</b>	<b>Cal</b>	<b>192.725</b>

### 2005

#### at Berkeley, Calif.

Place	Team	Score
1.	UCLA	197.100
2.	Arizona	195.925
3.	Oregon State	195.900
4.	Stanford	194.600
5.	Washington	194.425
6.	ASU	192.975
<b>7.</b>	<b>Cal</b>	<b>163.550</b>

### 2004

#### at Tucson, Ariz.

Place	Team	Score
1.	Stanford	197.900
2.	UCLA	197.875
3.	Oregon State	197.075
4.	Arizona	196.775
ASU	196.775	
6.	Washington	196.425
<b>7.</b>	<b>Cal</b>	<b>195.625</b>

### 2003

#### at Los Angeles, Calif.

Place	Team	Score
1.	UCLA	198.175
2.	Stanford	197.700
3.	ASU	197.075
4.	Washington	196.750
5.	Oregon State	196.650
6.	Arizona	195.950
<b>7.</b>	<b>Cal</b>	<b>195.925</b>

### 2002

#### at Stanford, Calif.

Place	Team	Score
1.	UCLA	197.625
2.	Arizona	197.050
3.	Stanford	196.150
4.	Oregon State	196.125
5.	Washington	195.425
6.	ASU	194.125
<b>7.</b>	<b>Cal</b>	<b>189.700</b>

### 2001

#### at Seattle, Wash.

Place	Team	Score
1.	Stanford	197.850
2.	UCLA	197.800
3.	Washington	197.475
4.	Oregon State	196.550
5.	ASU	195.725

## CAL AT THE PAC-12 CHAMPIONSHIPS

6.	Arizona	195.525
7.	<b>Cal</b>	<b>193.750</b>

### 2000

#### at Tempe, Ariz.

Place	Team	Score
1.	UCLA	197.700
2.	Oregon State	196.575
3.	Washington	195.900
4.	ASU	195.875
5.	<b>Cal</b>	<b>194.675</b>
6.	Stanford	193.850
7.	Arizona	192.950

### 1999

#### at Corvallis, Ore.

Place	Team	Score
1.	UCLA	197.775
2.	Oregon State	197.400
3.	ASU	196.025
4.	Arizona	195.150
	Stanford	195.150
6.	Washington	194.425
7.	<b>Cal</b>	<b>192.475</b>

### 1998

#### at Los Angeles, Calif.

Place	Team	Score
1.	Stanford	195.275
2.	Oregon State	194.950
3.	ASU	194.900
4.	UCLA	194.700
5.	Washington	193.700
6.	Arizona	192.800
7.	<b>Cal</b>	<b>189.200</b>

### 1997

#### at Tucson, Ariz.

Place	Team	Score
1.	UCLA	196.550
2.	Stanford	196.325
3.	Washington	196.025
4.	Oregon State	195.000
5.	Arizona	194.950
6.	ASU	194.925
7.	<b>Cal</b>	<b>194.325</b>

### 1996

#### at Corvallis, Ore.

Place	Team	Score
1.	Oregon State	196.775
2.	ASU	195.525
3.	Arizona	195.175

4.	UCLA	194.625
5.	Washington	193.150
6.	Stanford	193.000
7.	<b>Cal</b>	<b>192.375</b>

### 1995

#### at Tempe, Ariz.

Place	Team	Score
1.	UCLA	195.400
2.	ASU	195.150
3.	Arizona	193.450
4.	Oregon State	193.400
5.	Stanford	191.825
6.	Washington	191.625
7.	<b>Cal</b>	<b>190.275</b>

### 1994

#### at Seattle, Wash.

Place	Team	Score
1.	Oregon State	194.825
2.	UCLA	193.850
3.	ASU	193.650
4.	Stanford	191.550
5.	Washington	190.950
6.	Arizona	189.875
7.	<b>Cal</b>	<b>186.925</b>

### 1993

#### at Stanford, Calif.

Place	Team	Score
1.	UCLA	194.550
2.	Oregon State	193.800
3.	Arizona	193.200
4.	ASU	192.900
5.	Washington	190.800
6.	<b>Cal</b>	<b>189.400</b>
7.	Stanford	189.000

### 1992

#### at Tucson, Ariz.

Place	Team	Score
1.	Oregon State	194.85
2.	Arizona	194.70
3.	UCLA	193.65
4.	ASU	192.55
5.	Stanford	191.20
6.	<b>Cal</b>	<b>189.95</b>
7.	Washington	189.15

### 1991

#### at Los Angeles, Calif.

Place	Team	Score
1.	Oregon State	194.65

2.	UCLA	191.15
3.	Arizona	189.95
4.	ASU	189.50
5.	Stanford	187.75
6.	Washington	187.55
7.	<b>Cal</b>	<b>186.90</b>

### 1990

#### at Berkeley, Calif.

Place	Team	Score
1.	UCLA	191.50
2.	Arizona	189.30
3.	ASU	188.90
4.	Oregon State	185.45
5.	<b>Cal</b>	<b>185.40</b>
6.	Washington	185.10
7.	Stanford	183.45

### 1989

#### at Corvallis, Ore.

Place	Team	Score
1.	UCLA	195.20
2.	Oregon State	193.65
3.	ASU	191.10
4.	Arizona	190.00
5.	Washington	188.70
6.	Stanford	186.55
7.	<b>Cal</b>	<b>185.00</b>

### 1988

#### at Tempe, Ariz.

Place	Team	Score
1.	UCLA	189.45
2.	ASU	187.05
3.	Oregon State	185.95
4.	Arizona	185.30
5.	Washington	184.20
6.	Stanford	182.55
7.	<b>Cal</b>	<b>179.55</b>

### 1987

#### at Pullman, Wash.

Place	Team	Score
1.	UCLA	188.45
2.	Arizona	187.65
3.	Washington	186.15
4.	ASU	186.10
5.	Oregon State	185.25
6.	Stanford	181.75
7.	<b>Cal</b>	<b>178.65</b>
8.	WSU	177.95

## CAL AT THE NORCAL CHAMPIONSHIPS

### 1986 (NORPAC)

at Seattle, Wash.

1.	Washington	185.80
2.	Oregon State	185.70
3.	<b>Cal</b>	<b>183.15</b>
4.	Oregon	176.40
5.	San Jose State	175.90
6.	Washington State	157.15

### 1985 (NORPAC)

at Unknown

1.	Oregon State	184.45
2.	Washington	181.8
3.	Washington State	178.55
4.	<b>Cal</b>	<b>173.6</b>
5.	San Jose State	167.6
6.	Oregon	160.75

### 1984 (NORPAC)

at Berkeley, Calif.

1.	<b>Cal</b>	<b>183.9</b>
2.	Washington	179.40
3.	Oregon State	179.35
4.	San Jose State	167.00
5.	Oregon	165.85
6.	Washington State	154.50

### 1983 (NORPAC)

at Pullman, Wash.

1.	Oregon State	183.2
2.	Washington	180.0
3.	<b>Cal</b>	<b>177.6</b>
4.	Washington State	173.8

### 1982 (NORCAL)

at Unknown

1.	Stanford	143.15
2.	<b>Cal</b>	<b>136.85</b>
3.	Fresno State	130.7
4.	San Jose State	126.8

### 1981 (NORCAL)

at Fresno, Calif.

1.	Stanford	139.2
2.	Fresno State	133.85

3.	<b>Cal</b>	<b>130.8</b>
4.	San Jose State	115.55

### 1980 (NORCAL)

at San Jose, Calif.

1.	Stanford	134.80
2.	San Jose State	130.70
3.	<b>Cal</b>	<b>130.55</b>
4.	Fresno State	127.65

### 1979 (NORCAL)

at San Jose, Calif.

1.	San Jose State	130.55
2.	Stanford	127.25
3.	<b>Cal</b>	<b>119.15</b>
4.	Fresno State	110.35

### 1978 (NORCAL)

at San Jose, Calif.

1.	San Jose State	131.80
2.	Stanford	104.55
3.	Fresno State	99.65
4.	<b>Cal</b>	<b>68.9</b>

## CAL AT THE NCAA REGIONAL CHAMPIONSHIPS

### 2014

#### at Minneapolis, Minn.

Place	Team	Score
1.	Oklahoma	197.725
2.	Illinois	196.600
3.	Minnesota	196.350
<b>4.</b>	<b>Cal</b>	<b>195.700</b>
5.	Southern Utah	195.150
6.	San Jose State	193.950

### 2013

#### at Corvallis, Ore.

Place	Team	Score
1.	Georgia	197.425
2.	Arkansas	196.950
3.	Arizona State	195.700
4.	Oregon State	195.375
5.	Boise State	195.350
<b>6.</b>	<b>Cal</b>	<b>195.125</b>

### 2012

#### at Seattle

Individuals

### 2011

#### at Corvallis, Ore.

Individuals

### 2008

#### at Corvallis, Ore.

Individuals

### 2007

#### at Berkeley, Calif.

Place	Team	Score
1.	Utah	197.325
2.	Nebraska	196.675
3.	Missouri	194.300
<b>4.</b>	<b>Cal</b>	<b>193.900</b>
5.	Washington	193.300
6.	Sacramento State	191.725

### 2006

#### at Stanford, Calif.

Individuals

### 2004

#### at Corvallis, Ore.

Place	Team	Score
1.	Oklahoma	197.100
2.	Alabama	196.900
3.	Oregon State	196.850

4.	Boise State	195.275
<b>5.</b>	<b>Cal</b>	<b>195.175</b>
6.	CSU Fullerton	193.150

### 2003

#### at Salt Lake City, Utah

Place	Team	Score
1.	Utah	196.975
2.	Stanford	196.625
3.	Denver	195.350
<b>4.</b>	<b>Cal</b>	<b>195.025</b>
5.	Minnesota	193.125
6.	BYU	192.400

### 2002

#### at Corvallis, Ore.

Individuals

### 2001

#### at Los Angeles, Calif.

Place	Team	Score
1.	UCLA	197.775
2.	Oregon State	194.075
3.	BYU	193.050
<b>4.</b>	<b>Cal</b>	<b>192.175</b>
5.	Boise State	190.600
6.	CSU Fullerton	189.800

### 1999

#### at Corvallis, Ore.

Individuals

### 1998

#### at Seattle

Place	Team	Score
1.	Washington	196.150
2.	UCLA	195.100
3.	Stanford	194.625
4.	Boise State	193.925
5.	Oregon State	193.250
<b>6.</b>	<b>Cal</b>	<b>190.600</b>
7.	UC Davis	187.725

### 1997

#### at Boise, Idaho

Place	Team	Score
1.	UCLA	196.300
2.	Washington	195.725
3.	Oregon State	195.075
4.	Boise State	194.750
5.	Stanford	193.950
<b>6.</b>	<b>Cal</b>	<b>193.050</b>
7.	CSU Fullerton	190.925

### 1996

#### at Corvallis, Ore.

Place	Team	Score
1.	UCLA	195.450
2.	Oregon State	195.000
3.	Stanford	194.700
4.	Washington	193.350
5.	Boise State	192.250
6.	CSU Fullerton	191.475
<b>7.</b>	<b>Cal</b>	<b>191.250</b>

### 1995

#### at Corvallis, Ore.

Place	Team	Score
1.	UCLA	195.950
2.	Oregon State	194.925
3.	Stanford	192.575
4.	Washington	192.400
<b>5.</b>	<b>Cal</b>	<b>191.650</b>
6.	CSU Fullerton	191.150
7.	Boise State	191.075

### 1994

#### at Boise, Idaho

Place	Team	Score
1.	UCLA	194.300
2.	Oregon State	193.550
3.	Washington	191.550
4.	CSU Fullerton	191.275
<b>5.</b>	<b>Cal</b>	<b>190.025</b>
6.	Boise State	189.450
7.	Stanford	188.775

### 1993

#### at Corvallis, Ore.

Individuals

### 1992

#### at Berkeley, Calif.

Place	Team	Score
1.	Oregon State	193.775
2.	UCLA	192.725
<b>3.</b>	<b>Cal</b>	<b>192.100</b>
4.	Stanford	191.250
5.	Boise State	188.775
6.	UC Santa Barbara	187.050
7.	Washington	186.525

### 1991

#### at Corvallis, Ore.

Place	Team	Score
1.	Oregon State	194.950
<b>2.</b>	<b>Cal</b>	<b>190.550</b>

## CAL AT THE NCAA REGIONAL CHAMPIONSHIPS

3.	Washington	190.225
4.	UCLA	189.775
5.	CSU Fullerton	188.200
6.	Stanford	187.750
7.	Boise State	185.700

### 1990

at Los Angeles, Calif.

Place	Team	Score
1.	UCLA	192.050
2.	CSU Fullerton	191.700
3.	Oregon State	189.700
4.	Washington	187.475
<b>T5.</b>	<b>Cal</b>	<b>185.900</b>
T5.	Stanford	185.900
7.	Boise State	185.375

### 1989

at Fullerton, Calif.

Place	Team	Score
1.	UCLA	193.250
2.	CSU Fullerton	191.850
3.	Oregon State	190.850
4.	Washington	187.700
5.	Boise State	186.150
6.	Stanford	185.600
<b>7.</b>	<b>Cal</b>	<b>183.300</b>

### 1988

at Fullerton, Calif.

Individuals

### 1987

at Seattle

Place	Team	Score
1.	UCLA	190.750
2.	Washington	187.350
3.	Oregon State	186.350
4.	Stanford	183.800
5.	CSU Fullerton	180.600
<b>6.</b>	<b>Cal</b>	<b>178.150</b>
7.	Boise State	178.050

### 1986

at Corvallis, Ore.

Place	Team	Score
1.	CSU Fullerton	188.450
2.	UCLA	186.700
3.	Oregon State	183.700
4.	Washington	183.350
5.	Stanford	181.500
<b>6.</b>	<b>Cal</b>	<b>181.00</b>

### 1985

at Unknown

Individuals

### 1984

at Fullerton, Calif.

Place	Team	Score
1.	CSU Fullerton	187.300
2.	UCLA	183.450
3.	Washington	181.750
4.	Oregon State	179.950
<b>5.</b>	<b>Cal</b>	<b>179.450</b>
6.	Stanford	176.800

### 1983

at Fullerton, Calif.

Place	Team	Score
1.	Fresno State	187.900
2.	UCLA	182.950
3.	Oregon State	179.800
4.	USC	177.850
5.	Washington	176.100
6.	San Diego State	174.450
<b>7.</b>	<b>Cal</b>	<b>174.000</b>

## NCAA REGIONALS SERIES RECORDS

TEAM	RECORD
Alabama	0-1
Arizona State	0-1
Arkansas	0-1
Boise State	7-6
BYU	1-1
CSU Fullerton	5-7
Denver	0-1
Fresno State	0-1
Georgia	0-1
Illinois	0-1
Minnesota	1-1
Missouri	0-1
Nebraska	0-1
Oklahoma	0-2
Oregon State	0-16
Sacramento State	1-0
San Diego State	0-1
San Jose State	1-0
Southern Utah	1-0
Stanford	4-8-1
UC Davis	1-0
UC Santa Barbara	1-0
UCLA	1-13
USC	0-1
Utah	0-2
Washington	3-11



# CAL AT THE NCAA NATIONAL CHAMPIONSHIPS

## 2014

at Birmingham, Ala.

### INDIVIDUALS

Gymnast	Event	Score	Place
Alicia Asturias	V	9.80	56th
	UB	9.80	48th
	BB	9.80	40th
	FX	9.75	77th
	AA	39.150	21st
Dallas Crawford	UB	9.85	20th

## 2003

at Omaha, Neb.

### INDIVIDUALS

Gymnast	Event	Score	Place
My-Lan Dodd	V	9.70	25th
	UB	9.775	13th
	BB	9.29	39th
	FX	9.75	28th
	AA	39.150	23rd

## 1994

at Salt Lake City, Utah

### INDIVIDUALS

Gymnast	Event	Score	Place
Candice Kwok	V	9.875	17th
	UB	8.800	78th
	BB	9.125	70th
	FX		
	AA	27.800	71st

## 1992

at St. Paul, Minn.

Place	Team	Score
1.	Utah	195.65
2.	Georgia	194.60
3.	Alabama	193.35
4.	Penn State	192.70
5.	Arizona	191.95
6.	Oregon State	191.30
7.	Arizona State	191.00
8.	<b>Cal</b>	<b>190.70</b>
9.	UCLA	189.80
10.	Stanford	189.10
11.	Florida	188.70
12.	BYU	187.70

## 1991

at Tuscaloosa, Ala.

### INDIVIDUALS

Gymnast	Event	Score	Place
Kristen Smyth	V	9.625	34th
	UB	8.95	82nd
	BB	8.90	65th
	FX	9.50	31st
	AA	36.975	43rd

## 1990

at Corvallis, Ore.

### INDIVIDUALS

Gymnast	Event	Score	Place
Cindy Tom	UB	9.775	11th

## 1986

at Gainesville, Fla.

### INDIVIDUALS

Gymnast	Event	Score	Place
Ellis Wood	V		
	UB		
	BB		
	FX		
	AA	36.400	27th

\*records incomplete

## 1985

at Salt Lake City, Utah

### INDIVIDUALS

Gymnast	Event	Score	Place
Ellis Wood	V		
	UB		
	BB		
	FX		
	AA	35.600	36th

\*records incomplete

## 1984

at Los Angeles

### INDIVIDUALS

Gymnast	Event	Score	Place
Ellis Wood	V	9.35	14th
	UB	9.05	45th
	BB	8.70	35th
	FX	9.15	24th
	AA	36.25	21st

# NCAA CHAMPIONSHIPS SERIES RECORDS

TEAM	RECORD
Alabama	0-1
Arizona	0-1
Arizona State	0-1
BYU	1-0
Florida	1-0
Georgia	0-1
Oregon State	0-1
Penn State	0-1
Stanford	1-0
UCLA	1-0
Utah	0-1

## ALL-TIME ROSTER (A-N)

<b>A</b>	
Aitkenhead, Caitlin	2006
Alden, Elizabeth	1997-98
Alferos, Leilani	2012-14
Anderson, Judy	1977
Arnold, Lisa	2000-02
Asturias, Alicia	2011-14

<b>B</b>	
Bails, Emily	1996-99
Baker, Lindsay	1999-01
Baker, Robin	1987
Baldwin, Renee	1978-81
Ballmer, Leslie	1992-94
Barrett, Jennifer	1979-80
Beckington, Carrie	1974-75
Bennett, Joanna	2006-09
Berlin, Elizabeth	1997-99
Bernadou, Nanette	1978-79
Bernheimer, Susan	1984
Bialosky, Jennifer	1996-98
Binkley, Barbara	1983
Bowman, Susan	1974
Brant, Dana	1975
Breannan, Laurel	1981
Buack, Sheilah	2002-03
Tina Burfield	1988

<b>C</b>	
Capsuto, Tara	2002
Cashman, Nicola	2007-08
<b>Castillo, Isabelle</b>	<b>2014-present</b>
Cephus, Justine	2004-07
Chan, Winnie	1975-76
Chang, Carol	2010-2013
Chang, Monique	2003-04
Chang, Paula	1998-01
Chau, Debbie	1980
Chen, Margaret	1981
Cheng, Stefanie	2008-10
Chiprut, Rebecca	1992
Chock, Karissa	2001-04
Christiansen, Lisa	1974
Christiansen, Tennille	1995
Coates, Bridgett	1999-00
Crawford, Dallas	2011-14
Cummins, Susan	1974

<b>D</b>	
Day, Nicole	2007
Debert, Chantel	1997-98
DeCecco, Diane	1983
Dillon, Alexandra	2005
Dinkel, Christina	1990-93
Distenfino, CeCilia	1977
Dodd, My-Lan	2002-05
Dolecki, Ranae	1974

<b>Draghi, Zoe</b>	<b>2014-present</b>
Duke, Sharon	1985

<b>E</b>	
Evans, Lori	1988

<b>F</b>	
Ferencz, Keri	1974
Ferrin, Cara	1991
Fiorillo, Sarah	2006
Fracchia, Carla	1982

<b>G</b>	
Gaidish, Jackie	1992-95
<b>Gallarzo, Alicia</b>	<b>2015-present</b>
Garcia, Adrienne	2002-04
Garcia, Anja	2003-04
Garcia, Isabel	2004-07
Garfinkle, Jan	1976
Garrett, Lindsay	1996-98
Gee, Avery	2008-11
Gilcrest, MaryAnn	1977
Glass, Bridgette	2006-09
Goldenberg, Ruth	1978
Goyer, Mimi	1990-93
Green, Syd	1988-89
Griesemer, Jenny	1988-91

<b>H</b>	
Hale, Mary	1982
Halbach, Kathy	1976-78
Hannes, Nicki	1981-82
Hansen, Jill	1980
Hanson, Carol	1974
Harkey, Lorle	1974
Harrington, Christine	1974-76
Heilig, Susan	1979-80
Heiman, Marilyn	1980-82
Henry, Elizabeth	1976-77

<b>Heymann, Kristina</b>	<b>2013-present</b>
Hirano, Patricia	1985
<b>Ho, Dana</b>	<b>2014-present</b>
Hocini, Sophia	2007-2010
Holzer, Lori	1991
Hone, Jennifer	1981-83
Hontz, Julia	1986-88
<b>Howe, Jessica</b>	<b>2014-present</b>

<b>I</b>	
Ichikawa, Jill	1997
Issacson, Leah	1997
Ishino, Genine	2000-01
Ito, Laura	1987-88
Iyemura, Karin	1986-87, 89

<b>J</b>	
James, Pamela	1979-80
Johnson, Shana	2009-2011
Johnson, Kristen	1980

Johnson, Monique	2001-02
Jones, Heather	1986-88
Jong, Pam	1988-91

<b>K</b>	
Kaibara, Kristine	1999-01
Kang, Jennie	1997-99
Kassutto, Sigall	1989-92
Kaufmann, Kristy	1989, 91-92
Kaye, Moly	1982
Kelley, Jessica	2006-09
Kelsall, Karen	1981-84
Kenny, Helen	1998-99
Khoury, Leila	1997-00
Kim, Stephanie	2001-04
Kimelman, Judy	1980
Kolander, Amy	1983
<b>Kratzke, Maddie</b>	<b>2012-present</b>
Kreifels, Carrie	2000-01
Kvochak, Karen	1988
Kwok, Candice	1994-97

<b>L</b>	
Lau, Wendy	1997
Lee, Cindy	1980
Lee, Denise	1977
Leggitt, Alexandra	2009-2012
Lessler, Janine	1985
Lew, Marina	1974-75
Lew, Nicolette	2010-2012
<b>Leong, Serena</b>	<b>2013-present</b>
Loomis, Jennifer	1974
Loughley, Kala	1983-86
Luce, Siobhan	2005-08

<b>M</b>	
Maeda, Miho	2002-2005
Mapa, Angela	1996-99
Marriot, Barbara	1976-77
Mirreghabie, Nassim	2008
McBride, Kati	1989-92
McDonald, Elizabeth	1975-76
McKnight, Janet	2000-03
McLeod, Cheryl	1978-81
McLeod, Nicole	1989-92
Monzon, Marcia	1980
Mori, Judy	1982-84

<b>N</b>	
Nakamura, Keiko	2005-08
Neishi, Kristen	2000-01
Nilsson, Lina,	2011-2012
Nishimoto, Christine	1995-98
Notham, Janet	1975
Ng, Joyce	1975-79

## ALL-TIME ROSTER (O-Z)

### O

O'Brien, Madisyn	2010-2013
Obermeyer, Sandra	1976
Olivere, Stina	2010-2013
Olver, Pari	1998-01
Ornellas, Mindy	1994-97
Orsino, Samantha	1990-93
<b>Owens, Charlie</b>	<b>2014-present</b>

### P

Packard, Patricia	1976-78
Palmieri, Tina	1983-84
<b>Palomares, Desiree</b>	<b>2014-present</b>
Patton, Wendy	1984
Patch, Kim	1977
<b>Paz, Crystal</b>	<b>2012-present</b>
Pierce, Heather	1988, 90
Pierce, Mariesah	2010-2013
Pittullo, Britani	2003-06
Power, Erin	1993-96
Pressentin, Kristen	1987

### R

Rackham, Joanne	1974-76
Rasmussen, Ann	1974-75
Rawlins, Rachel	1983-84
Redon, Leah	2009-10
<b>Richardson, Emily</b>	<b>2014-present</b>
Roberts, Shannon	1988-89
<b>Robinson, Arianna</b>	<b>2015-present</b>
Rocchi, Vanna	2006-07
Rodgers, Polly	1983-86
Rosenzweig, Arla	2010-2013
Rusconi, Sharon	1976

### S

Schmidt, Melinda	1978
Schneider, Carrie	1995-96
Schneider, Heather	1993-96
Schultz, Cynthia	1974
Seibolt, Susan	1974-75
Senteno, Reiko	2008-09
Shah, Ankita	2010-2011
Shew, Doreen	1984-85
Shigeoka, Cassie	1992-95
Shipp, Lauren	2002-05
Sibley, Barbara	1974-77
Sims, Amy	1993-94
Sincharoen, Sirinda	1993-96
Skiles, Sandra	1979-80
Smith, Karen	1977
Smith, Lisa	1985
Smyth, Kristen	1989-92
Snodgrass, Marcia	1974-76
Spomer, Chelsea	2010-2013
Stacey, Jenny	1982-83
<b>Sternberg, Yuleen</b>	<b>2015-present</b>

Stinar, Melissa	2006
Stitser, Christie	1988
Stone, Katreece	2000-02
Straus, Robin	1974
Suggs, Dori	1980-81
Suksanong, Dawn	1999
Szutu, Alli	2005-08

### T

Tam, Tiffany	2006-08
Takamoto, Debbie	1988
<b>Takara, Amber</b>	<b>2014-present</b>
Tatson, Gwen	1974
Tom, Cindy	1990-94

### V

Valencia, Lisa	1975-76
Van Heuit, Linda	1974
Varon, Erica	2009-2012
Volding, Krista	1986

### W

Wampler, Ruth	1976-77
Wang, Jennifer	1994-97
Washington, Lisa	1993-96
Watkins, Abby	1988
Webster, Kelly	1996-97
Weinberg, Laura	1978-79, 81
Wells, Nicki	2005-08
Wertz, Ingrid	1989-92
White, Vicki	1986-87
<b>Widener, Jordan</b>	<b>2013-present</b>
<b>Williams, Toni-Ann</b>	<b>2015-present</b>
Williams, Lydia	2006-08
Wong, Elyse	2004-07
Wong, Rena	1977, 80-81
Wong, Sharyl	1955
Wood, Ellis	1984-87
Worner, Laura	1981-84

### Y

Yamaguchi, Carrie	1979-80
Yeh, Jarmin	2000-01
Young, Nicole	1988

### Z

Zarodo, Danuta	1976
Zdvorak, Kendall	2006-08

# BROADCAST ROSTER



**ISABELLE CASTILLO**  
AA | 5-1 | SO  
Newark, Calif.



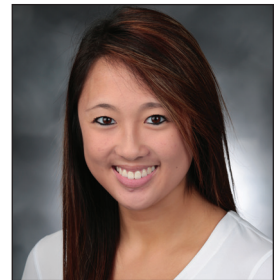
**ZOE DRAGHI**  
AA | 5-1 | SO  
Long Beach, Calif.



**ALICIA GALLARZO**  
AA | 5-3 | FR  
Burbank, Calif.



**KRISTI HEYMANN**  
AA | 5-3 | JR  
Los Gatos, Calif.



**DANA HO**  
AA | 5-3 | SO  
Plano, Texas



**JESSICA HOWE**  
AA | 5-3 | SO  
Plano, Texas



**MADDIE KRATZKE**  
V, UB, BB | 5-4 | SR  
Seattle, Wash.



**SERENA LEONG**  
V, BB, FX | 5-0 | JR  
San Ramon, Calif.



**CHARLIE OWENS**  
AA | 5-4 | SO  
Alta Loma, Calif.



**DESIREE PALOMARES**  
AA | 4-11 | SO  
San Dimas, Calif.



**CRYSTAL PAZ**  
V, BB, FX | 5-1 | SR  
Fremont, Calif.



**EMILY RICHARDSON**  
AA | 5-1 | SO  
Fort Smith, Ark.



**ARIANNA ROBINSON**  
AA | 5-2 | FR  
Chantilly, Va.



**YULEEN STERNBERG**  
AA | 5-3 | FR  
Berkeley, Calif.



**AMBER TAKARA**  
AA | 5-1 | SO  
Tacoma, Wash.



**JORDAN WIDENER**  
AA | 5-6 | JR  
Snohomish, Wash.



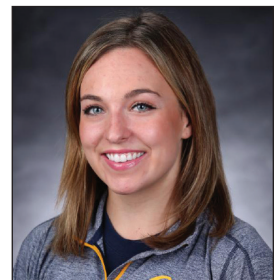
**TONI-ANN WILLIAMS**  
AA | 5-1 | FR  
Randallstown, Md.



**JUSTIN HOWELL**  
Head Coach  
Second Season



**LIZ CRANDALL-HOWELL**  
Assistant Coach  
Second Season



**JESSA HANSEN**  
Volunteer Coach  
First Season